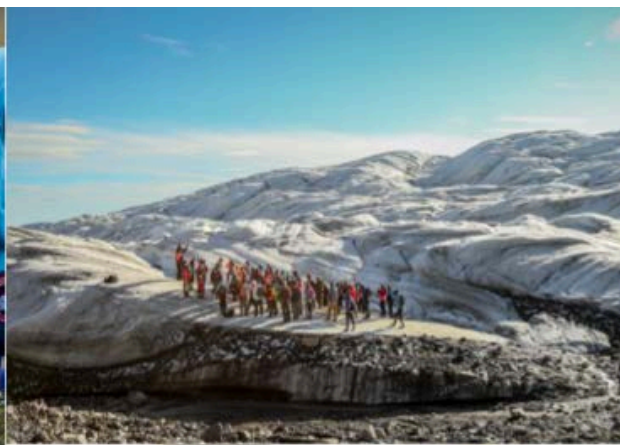
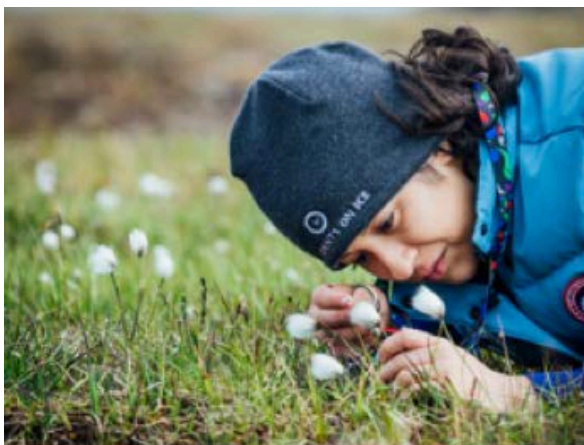


STUDENTS ON ICE

2015 ARCTIC EXPEDITION REPORT

JULY 27 to AUGUST 10, 2015



WWF - Canada



STUDENTS ON ICE

• Celebrating 15 years of Polar Education •

ANTARCTICA • ARCTIC



TABLE OF CONTENTS

Thank you from Students on Ice	2
Student Testimonials	3
Expedition Summary	6
Educational Programming	7
The 2015 Arctic Youth Expedition Journey	8
Highlights	9
Polar Ambassador Alumni Program	10
Media	11
Partners	12

THANK YOU from STUDENTS ON ICE

September 28, 2015

WWF Canada
Eglinton Ave. East, Suite 410
Toronto, ON M4P 3J1

Dear Paul,

I am very pleased to announce that the Students on Ice (SOI) 2015 Arctic Expedition was a great success! 2015 marked our 15th anniversary as an organization as well as our 15th expedition to the Arctic! To celebrate this important occasion SOI organized its largest expedition to date, with 112 Canadian and international students together with 80 renowned educators and staff members exploring the Arctic region.

Students and staff landed in Kangerlussuaq, Greenland where our expedition began with a visit to the Greenland ice sheet before boarding our expedition vessel and setting sail. We made our way north, along the western shores of Greenland, exploring the breathtaking natural landscapes and visiting communities such as Sisimiut, Ilulissat and Uummannaq.

This year's education program focused on exploration and discovery, knowledge building and sharing, and experiential learning. With each community visit and shore landing, students took part in various activities on a diverse range of topics from culture and history, botany and biology, traditional knowledge and arts and much more. Upon crossing the Davis Strait to Baffin Island, students and staff were greeted warmly in Pond Inlet and were able to experience the vast and geographically rich scenery of Sirmilik National Park. Here, students and staff took part in Inuit throat singing, paddling handcrafted traditional kayaks in the Northwest Passage, drum dancing and Inuit games.

It was an incredible journey in many ways. Our time aboard the *MV Ocean Endeavour* was filled with scientific inquiry and artistic expression, beautiful landscapes and new friendships. The students were able to experience and appreciate the rich cross-cultural interactions with others on board as well as the transformative power of SOI's education program and the Arctic region.

Goliah Makletzoff-Cazon, Ruth Kaviok and Domonic Iqalukjuak proved to be exceptional polar ambassadors and outstanding team members. They brought a positive attitude and an eagerness to learn, participate and grow to all components of our expedition. With these qualities, I have no doubt they will move forward from their Students on Ice journey to do great things! Jessica Park was also a wonderful addition to have onboard! Her willingness to contribute and enthusiastic interactions with students helped to make our expedition a success.

These experiences would not have been possible without you and WWF Canada, one of our key partners! As we look towards the 2016 Arctic Expedition, we hope to continue this partnership in order to provide these inspirational experiences to other deserving students.

Thank you for making such a meaningful, generous and positive impact in the lives of youth and for contributing to a successful 15 years of Students on Ice. I hope you enjoy this report.

In the Polar spirit,



Geoff Green
Founder and Executive Director

STUDENT TESTIMONIALS

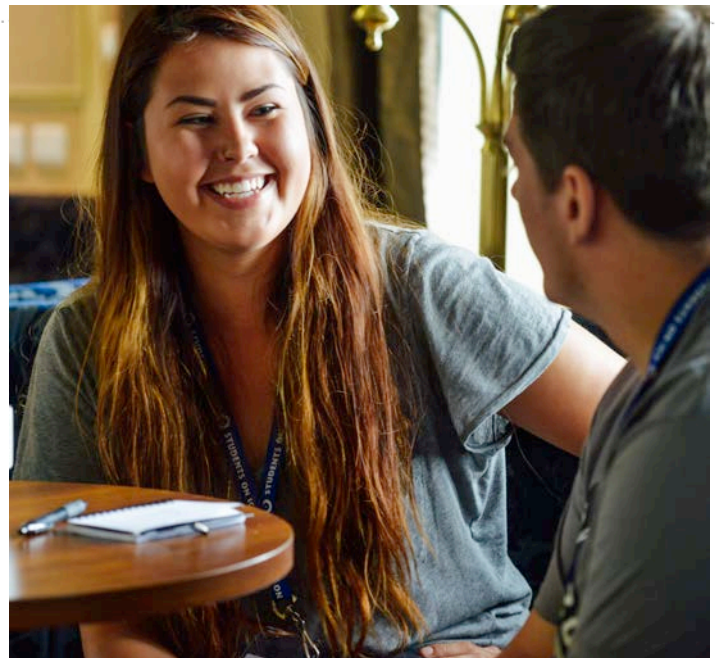
We can think of no better way of conveying the impact, gratitude and sense of what these students gained from their experiences than to share their thoughts, in their own words. Below you will find letters submitted by Goliah, Ruth and Domonic the recipients of the 2015 WWF-Canada scholarships:

To the World Wildlife Foundation;

I would like to give a huge thank you to you for sponsoring me on the SOT 2015 Arctic Expedition. Without your support, I would not have been able to participate on this amazing journey. With this opportunity I have learned so much, I've learned about social issues in the Arctic, the relationship between the indigenous people and the land, how they rely on the land and animals to survive. I've learned first hand of Climate change in the Arctic region, but more importantly, in coming face-to-face with the facts of Climate change + how it is affecting the people up north and soon all around the globe it not already. I have made friendships + connections with people that will open doors for me in the future. I have been able to share my passion with other people + have had the opportunity to listen to others express their passions. It's inspiring to hear other people my age doing so many amazing things. Words cannot describe this experience. It is something I will never forget and I can not wait to share my experience with people when I get home + use the knowledge I have gained to build a better future for myself - and to help other people - I have not figured out how exactly but I now have this foundation to build off of + to keep building. I am so excited for life! Thank you, I am so grateful for this opportunity.

THANK YOU!

Goliah Muletsoff-Cohen, A very appreciative student.





STUDENTS ON ICE
expeditions
ANTARCTICA • ARCTIC
www.studentsonice.com

Dear SPONSOR/WWF,

There are many ways I want to thank you. This trip is the most exciting thing I've ever done in my whole life, somehow this trip made me realize more about nature, resiliency and much more. If it wasn't for you I wouldn't be here, I would be at home working at our KFC, how boring it would've been. I've learned so much, made amazing friends, met so many inspiring leaders. I TRAVELED TO GREENLAND! GREENLAND! I've never thought I would go there in a million years! I feel like the luckiest human being on Earth. Wow, in the future I'll have a smile on myself/face because I have made the greatest ~~memories~~ memories in my life, and I thank you for that, this is all I can say,
THANK YOU!

Lea!

Sincerely,
Ruth Kaviok
Ruth Kaviok



Protect the Poles. Protect the Planet.

Natural Heritage Campus, 1740 Pink Road, Gatineau, Quebec J9J 3N7 Canada T 819-827-3300 TF 1-866-336-6423 F 819-827-9951 studentsonice.com

Dear WWF,

Thank you for sponsoring my Students On Ice trip!

I got to experience new things like water rafting, learn new things, like about drones, and go out of the country for the first time.

Going through part of the Northwest passage is something I always wanted to do, and I got to experience it.

I also enjoyed getting to learn from other students.

I very much appreciate your sponsorship without you, I wouldn't have experienced this beautiful trip.

ᐅᐅᐅᐅ ᐅᐅᐅᐅᐅᐅ. / I'm very grateful.

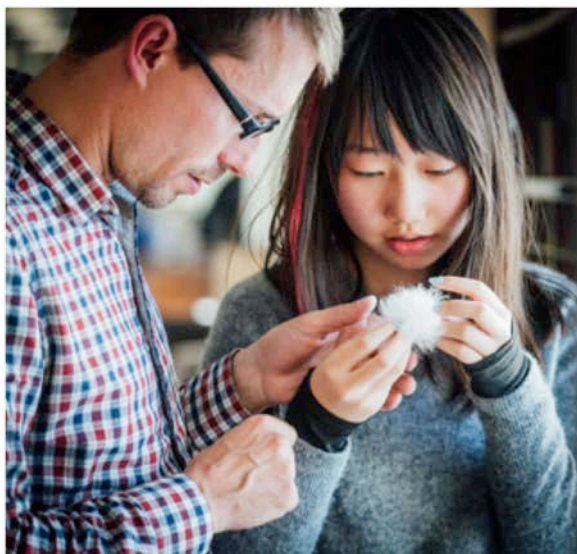
Dominic Igulusjuak, Clyde River
ᐅᐅᐅᐅ ᐅᐅᐅᐅᐅᐅ, ᐅᐅᐅᐅᐅᐅᐅ



EXPEDITION SUMMARY

This expedition offered a unique and exciting opportunity for participating youth to become aware of, and engaged in, the present and future challenges facing the circumpolar world. Throughout our journey, students were continually encouraged to expand their knowledge, re-evaluate their global perspectives and become polar ambassadors. A truly diverse group of 112 students participated in, and contributed to, this year's expedition program:

- **86** scholarship winners
- **97** high school students and **15** University/College students
- **68** female students and **47** male students
- **42** Aboriginal students (Inuit, Métis or First Nations)
- **12** Canadian provinces and territories represented (Alberta, British Columbia, Manitoba, New Brunswick, Newfoundland & Labrador, Nova Scotia, Northwest Territories, Nunavut, Ontario, Québec, Saskatchewan and Yukon Territory)
- **18** nations represented (Canada, U.S., Greenland, Malaysia, Norway, Rwanda, China, New Zealand, Italy, Denmark, Monaco, India, UK, Japan, Taiwan, France, Russia and the Netherlands)



EDUCATIONAL PROGRAMMING

The 2015 Arctic Expedition brought together an international team of scientists, artists, innovators, educators, explorers, historians, writers, elders, polar experts and, of course, students. Our program wove together elements of experiential, expeditionary, inquiry-based and place-based learning.

Starting with a very 'hands-on' approach, SOI's education program encouraged students to actively participate and develop critical thinking skills. Our expedition became a personal learning journey that included general knowledge building as well as the development of a relational understanding of the issues, opportunities and challenges presently facing the Polar Regions. In addition, our education program emphasized the importance of personal reflection on how each student might transfer their unique learning experience into his/her daily life post-expedition.



Our education program included five central and interconnected pillars: 1) Sustainability, 2) Change, 3) Creativity and Innovation, 4) Indigenous Ways of Knowing and 5) The Youth Effect.

These pillars were explored with students throughout the expedition in a variety of educational formats including presentations, Arctic Hour panel discussions, workshops, research projects, hands-on activities and small group seminars. By offering such a wide range of educational outlets, SOI provided all types of learners the opportunity to engage, reflect and translate their experiences to their own lives, ambitions and aspirations.

Throughout the journey, students connected to the natural world, developed an understanding and respect for the planet, explored solutions to our most pressing challenges and inspired each other to take positive action!

THE 2015 ARCTIC EXPEDITION JOURNEY

By sailing to the remote wilderness of the High Arctic region, our goal was to create transformative experiences with a diverse and exciting itinerary. Below is a map indicating the expedition's route. A full itinerary, with detailed summaries, photographs, videos and journals can be found on the SOI website: <http://studentsonice.com/expedition/arctic-expedition-2015>.

The expedition began in Ottawa, Ontario where students and staff met for two days of pre-expedition educational programming before flying to Kangerlussuaq, Greenland. Our expedition ship, the *Ocean Endeavour*, set sail on July 29th, exploring the western shores of Greenland before crossing the Davis Strait and sailing into the eastern entrance of the Northwest Passage.



Ottawa -> Kangerlussuaq -> Itilleq (village and fjord) -> Illulissat -> Uummannaq -> Pond Inlet -> Bylot Island and Sirmilik National Park -> Milne Inlet -> Port Leopold & Prince Leopold Island -> Caswell Tower & Beechey Island -> Resolute Bay -> Ottawa

HIGHLIGHTS

Each Students on Ice expedition is unique. While the students and staff that joined our expedition brought their own perspectives and interests, they also experienced their own highlights. Below are some of the moments our 2015 team can't stop talking about!

Greenland

- Exploring Itilleq Fjord alongside educators and polar experts
- Zodiac cruises in Illulisat's icefjord
- The impromptu expedition team sing-along during an evening zodiac cruise in Illulisat
- Sighting humpback whales, seals and other wildlife from the ship and zodiacs
- Playing soccer with local Greenlandic youth in Uummannaq



Canada

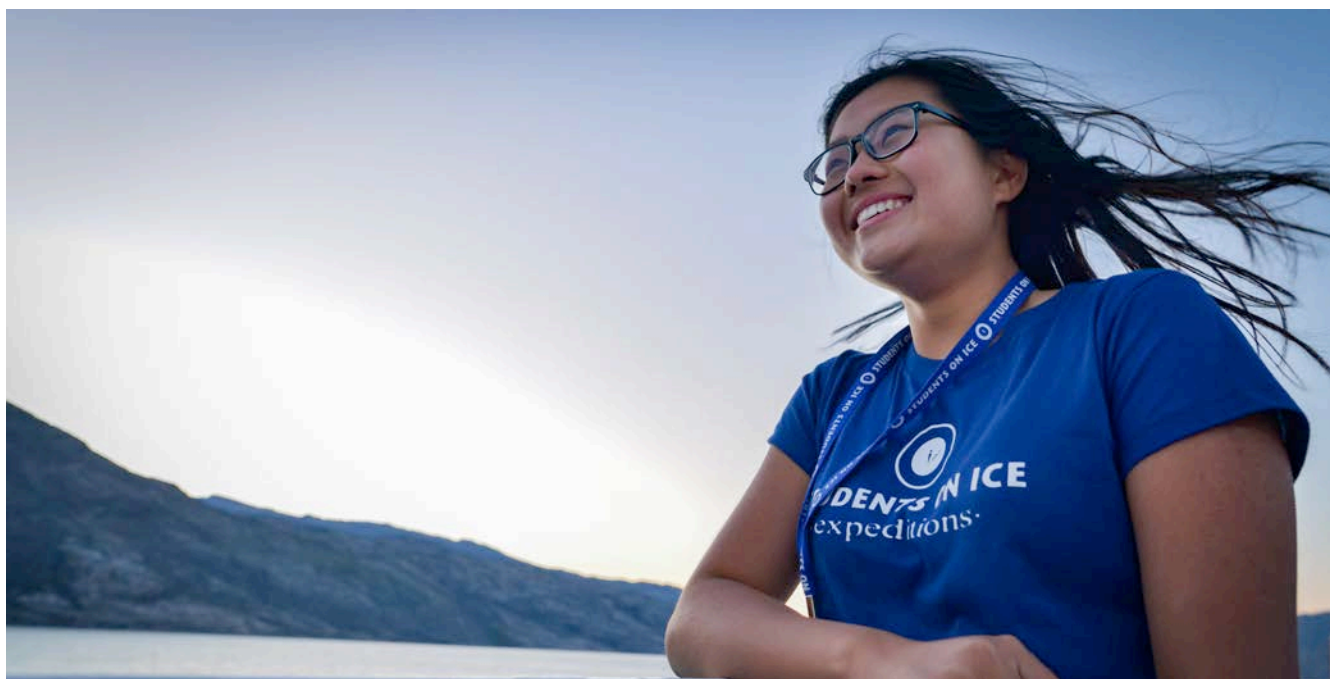
- Enjoying breathtaking views from a mountaintop in Sirmilik National Park
- Experiencing throat singing, drum dancing and Inuit games with community members in Pond Inlet
- Sighting polar bears
- Building, painting and paddling a traditional qajaq onboard our expedition ship
- Witnessing a rolling iceberg near Devon Island
- Taking a "Polar dip" in Croker Bay
- Participating in numerous shore-landing workshops including glaciology, botany, oceanography, Inuit sewing and art, history and more

POLAR AMBASSADOR ALUMNI PROGRAM

Since the first Students on Ice expedition in 1999, our Alumni have been returning home ready to make meaningful contributions to their families, communities, countries and the planet at large by sharing what they have learned.

The Polar Ambassador Pledge is a promise that all students, educators, chaperones and staff make to one another. The promise is that we will make changes in the way we live and act in the world. Part of this means sharing the experience of visiting a Polar Region. Following the expedition, the students are expected to give presentations about their experiences to their schools, local groups and sponsors. Post expedition, we provide alumni with a number of resources, tools and guidance to encourage and support them with their respective initiatives.

With the help of partners and supporters, students are inspired and gain a life changing experience that will shape and define their future. Following our expedition, students become friends for life, form important networks, and are ambassadors for the Polar Regions and our planet.



MEDIA

The expedition website was live throughout the expedition and featured professional quality photos and videos and included blogs written by students and staff drawing more than 80,000 page views. We maximized the effectiveness of our media exposure with a strategic outreach to regional and international media outlets promoting the expedition via web, radio, newspaper and television. Media coverage of students and staff is linked through the expedition website's [news portal](#). Several of the media outlets are listed below:

Website Coverage

- US Embassy
- Canadian Commission for UNESCO/
Commission Canadienne pour l'UNESCO
- Parks Canada
- Leacross Foundation
- WWF-Canada
- Stantec
- NordMAB
- Prince Albert II of Monaco Foundation
- Sultan Mizan Antarctic Research Foundation



Print Media

- | | |
|--|--|
| • Ottawa Citizen | • San Mateo Daily Journal |
| • South China Morning Post (Hong Kong) | • Santa Cruz Sentinel |
| • Montreal Times | • San Jose Mercury News |
| • Nunatsiaq News | • Palo Alto Daily News |
| • The Telegram (St. John's) | • The Providence Journal (Rhode Island) |
| • Peace Arch News (BC) | • Sarpsborg Arbeiderblad (SA) (Norway) |
| • Scarsdale Daily Voice (New York) | • Brampton Guardian |
| • Sermitsiaq AG (Greenland) | • Metroland Media |
| • Utusan Online (Malaysia) | • Burnaby News Leader |
| • The Western Star | • Philadelphia Inquirer |
| • Northern Journal (Northwest Territories) | • Japan School News (Tohoku Intl School) |
| • Richmond News | • La Presse (Montreal) |
| • Cheney Free Press (Washington) | • The Star (Malaysia) |
| • Mississauga News | |

Radio Coverage

- CBC Ottawa
- CBC Cree Radio
- CBC Radio Maritimes
- CBC News (St. John's, NL)
- CBC News North (Whitehorse)
- CBC News (Quebec)
- Radio Canada
- CFRA Radio (Ottawa)

Television

- CBC Ottawa
- CTV Ottawa
- APTN National News
- TFO Ottawa
- Rogers TV (Entre Nous) Ottawa

PARTNERS

Without the financial and in-kind support we receive from individuals, foundations, corporations, government departments, organizations and friends of SOI, we would not be able to offer the Arctic program. Thank you to everyone for your outstanding support in 2015!

Adventure Canada

Air Inuit

Air Labrador

Air North

Atuqtuarvik Corporation

Baffinland

Broadhead Brewing Company

Canada Council for the Arts (CCA)

Canada Goose

Canadian Heritage

Canadian Museum of Nature (CMN)

Canadian Commission for UNESCO

Climate One

Dufferin Peel Catholic District School Board (DPCDSB)

First Air – The Airline of the North

Government of Quebec

Government of Newfoundland and Labrador - Department of Fisheries and Aquaculture

Government of Nunavut - Department of Culture and Heritage

Government of Nunavut - Department of the Environment

Inuvialuit Regional Corporation (IRC)

Kakivak Association

Kativik Regional Government (KRG)

Kitikmeot Inuit Association

Leacross Foundation

Makivik Corporation

Marine Institute

NCC Investment Group Inc.

NordMAB

Nunatsiavut Government

Ottawa-Carleton District School Board (OCDSB)

Oceans North Canada

Parks Canada

People to People

Prince Albert II of Monaco Foundation

Qikiqtaaluk Corporation

Research and Development Corporation of Newfoundland and Labrador (RDC)

Royal Norwegian Embassy

Stantec

Sultan Mizan Antarctic Research Foundation

Tern Financial Group

The Beatrice Snyder Foundation

The Schad Foundation - Earth Rangers

US Embassy in Canada

WWF - Canada and Denmark



Thank you for your support!

