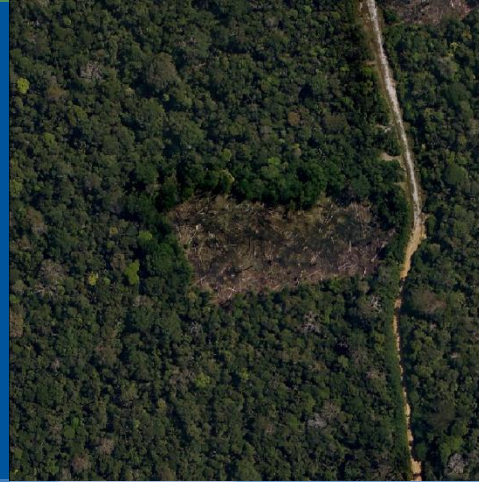


Technical Workshop on Reference Levels for REDD+ World Wildlife Fund, January 28, 2013



Draft Methodological Framework for REDD+ Reference Levels

NANCY HARRIS ECOSYSTEM SERVICES TEAM WINROCK INTERNATIONAL
NHARRIS@WINROCK.ORG

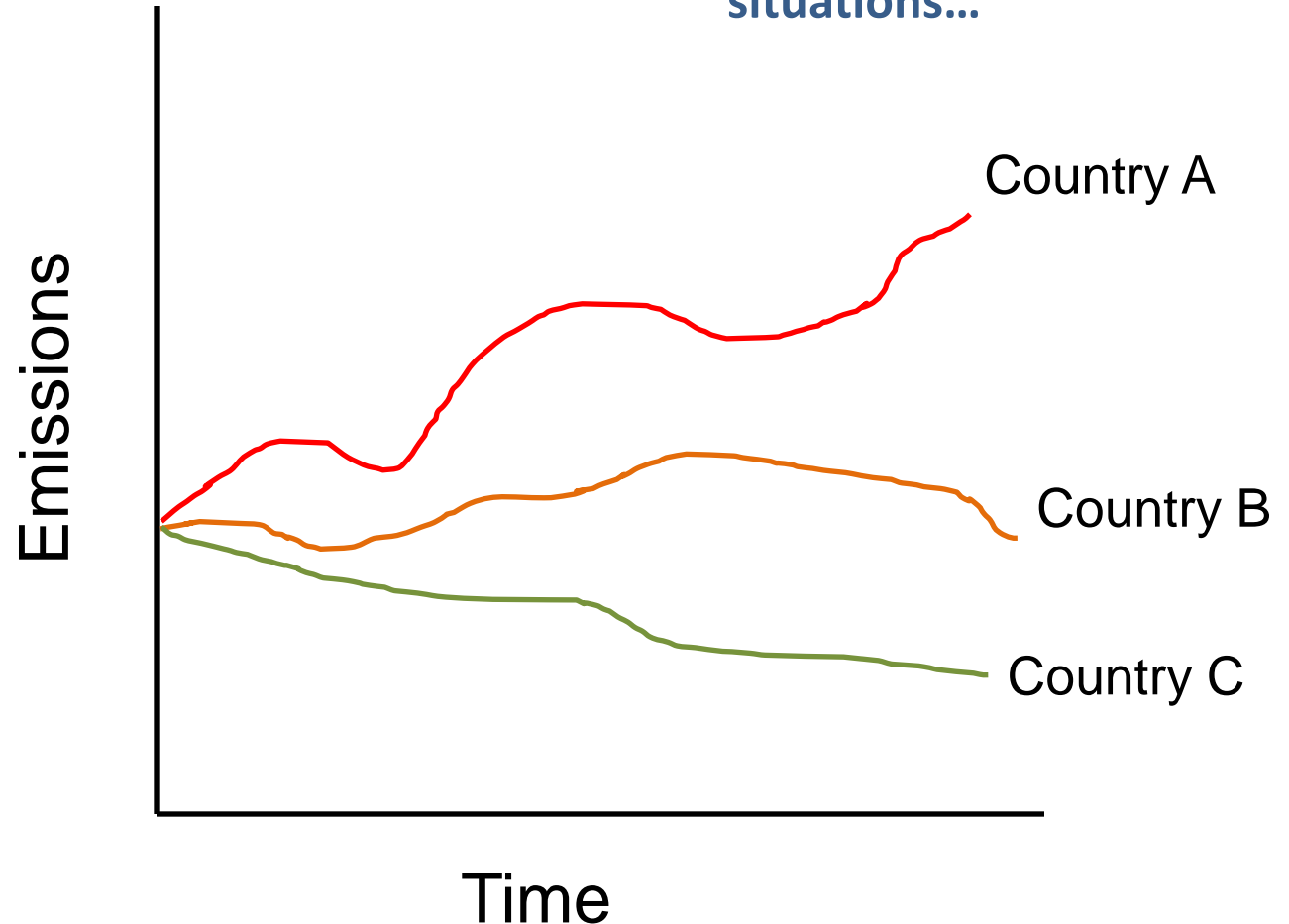


WINROCK
INTERNATIONAL

Where to begin?



Framework must apply to all country situations...



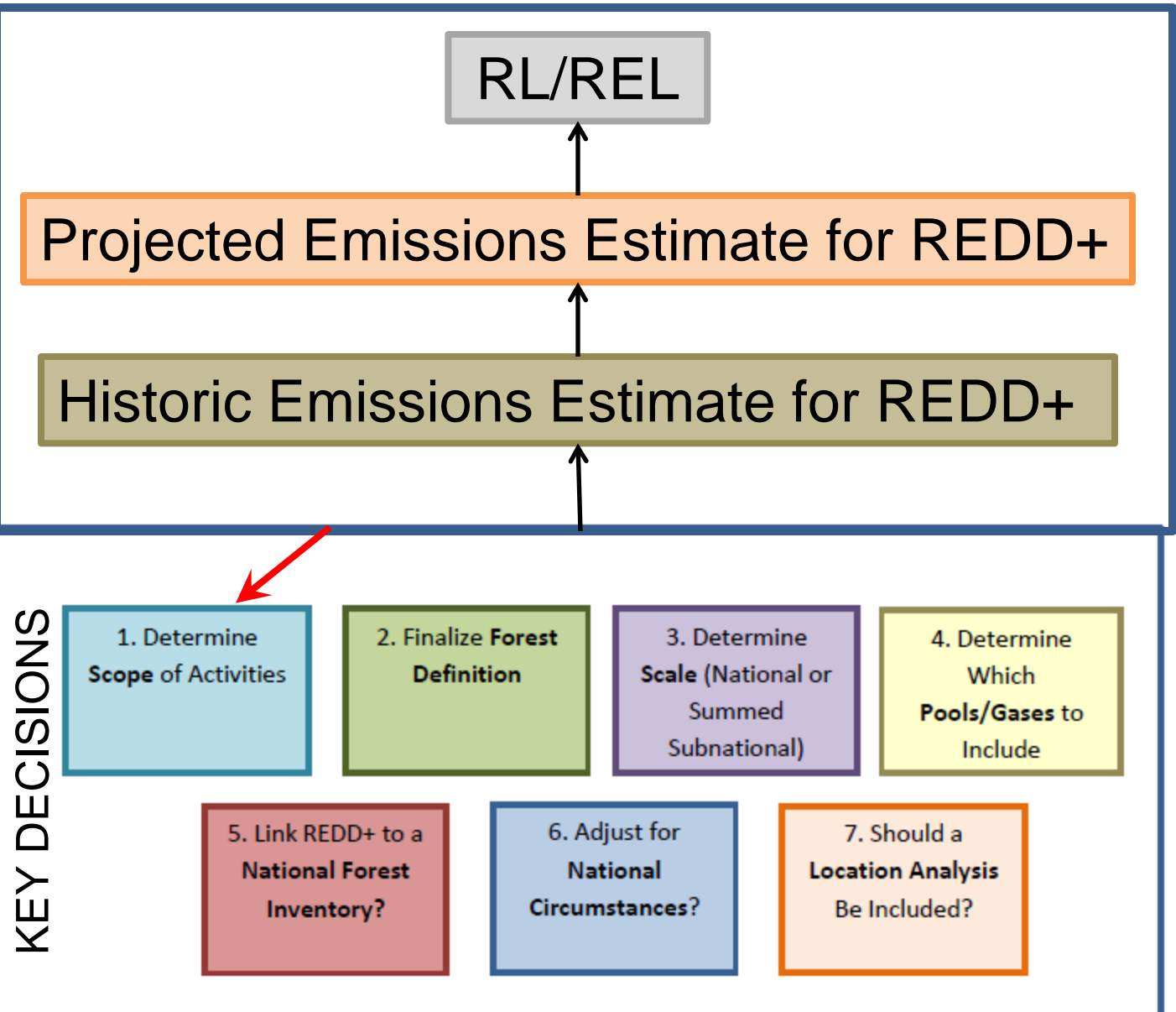
Goals of a Methodological Framework

Framework should be:

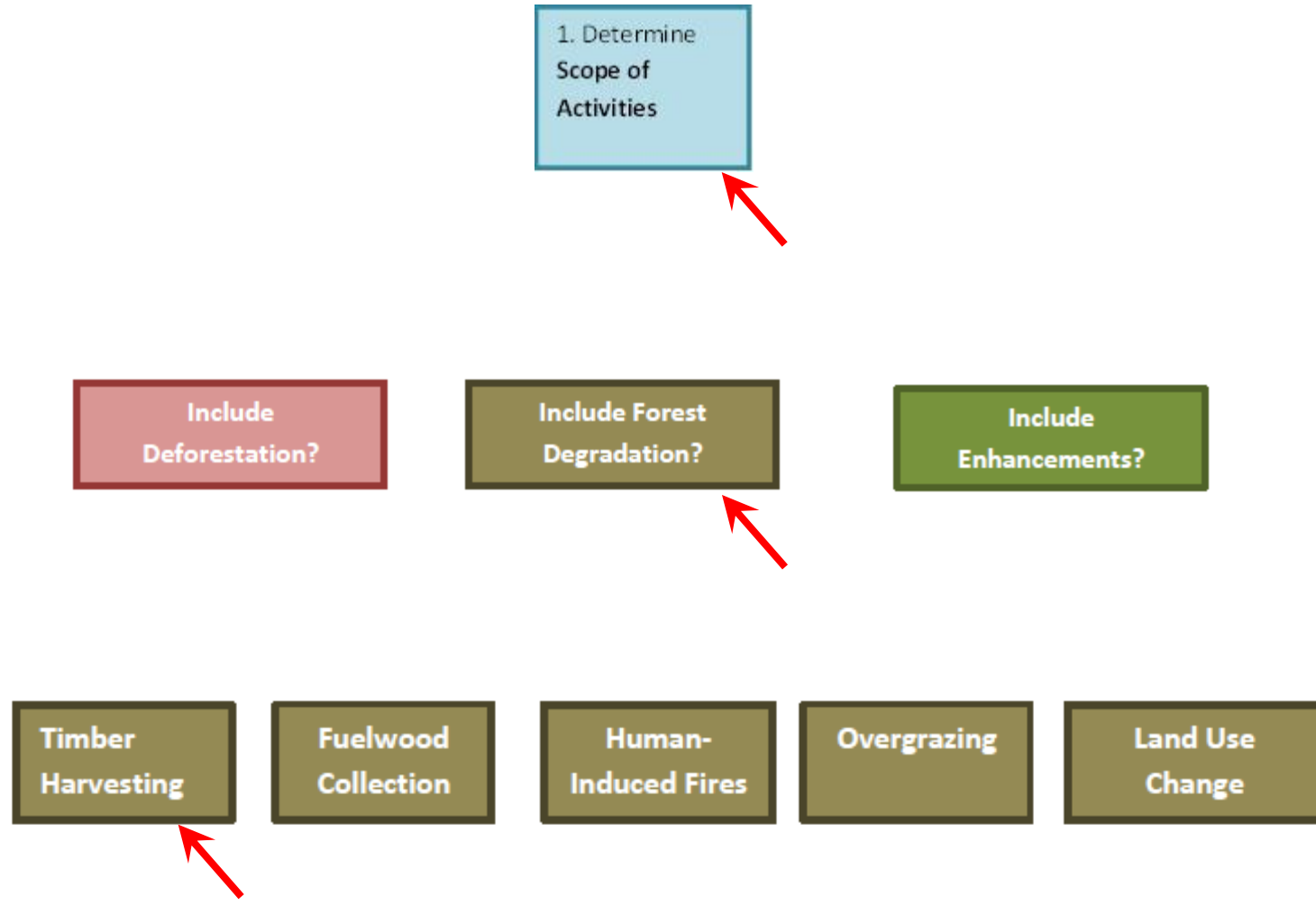
- Flexible
- Practical
- Feasible
- Acceptable to FCPF Member Countries
- Succinct
- Useable



Draft RL/REL Framework



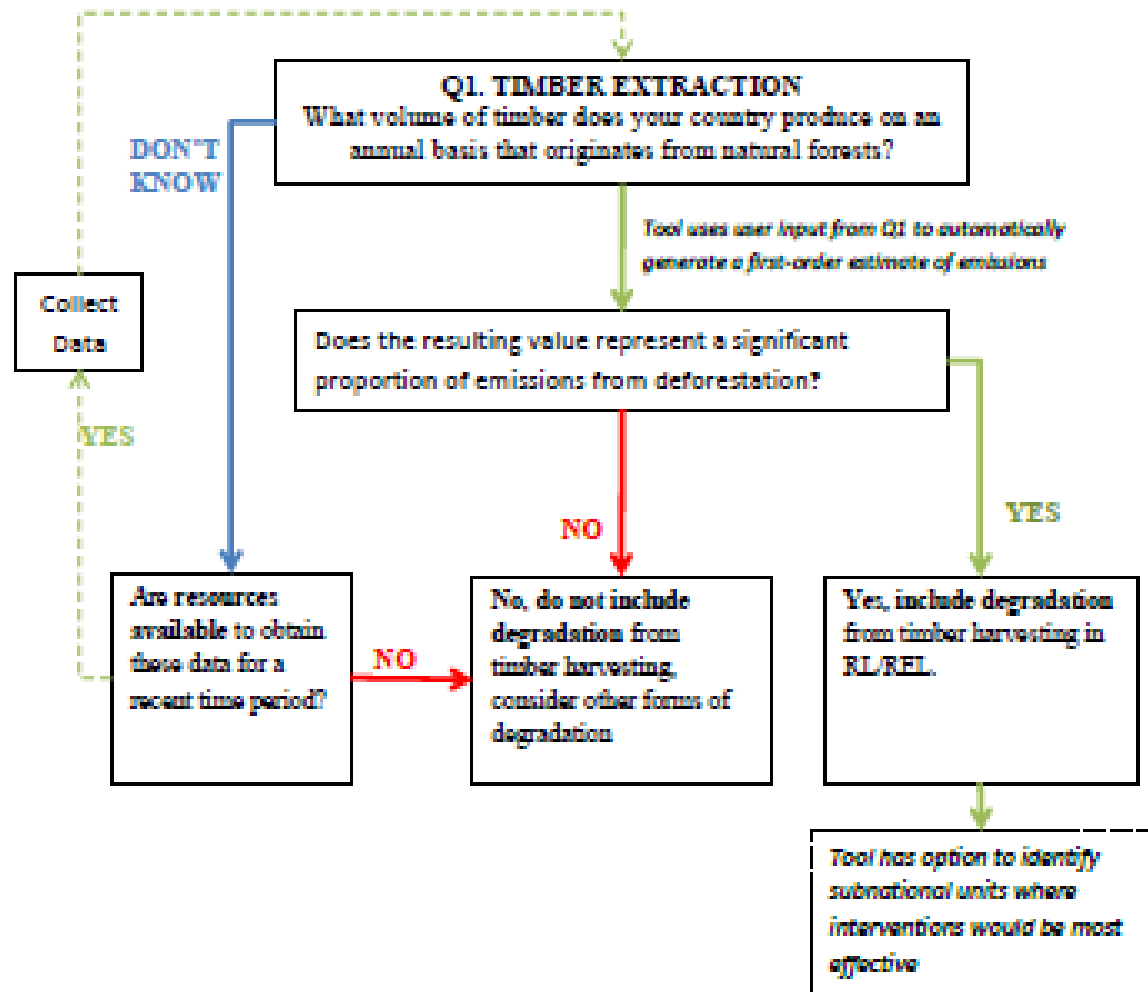
1. Scope of Activities



1. Scope of Activities



Timber Harvesting



1. Scope of Activities

The magnitude of estimated
GHG impacts determines
whether activity is significant
enough to include



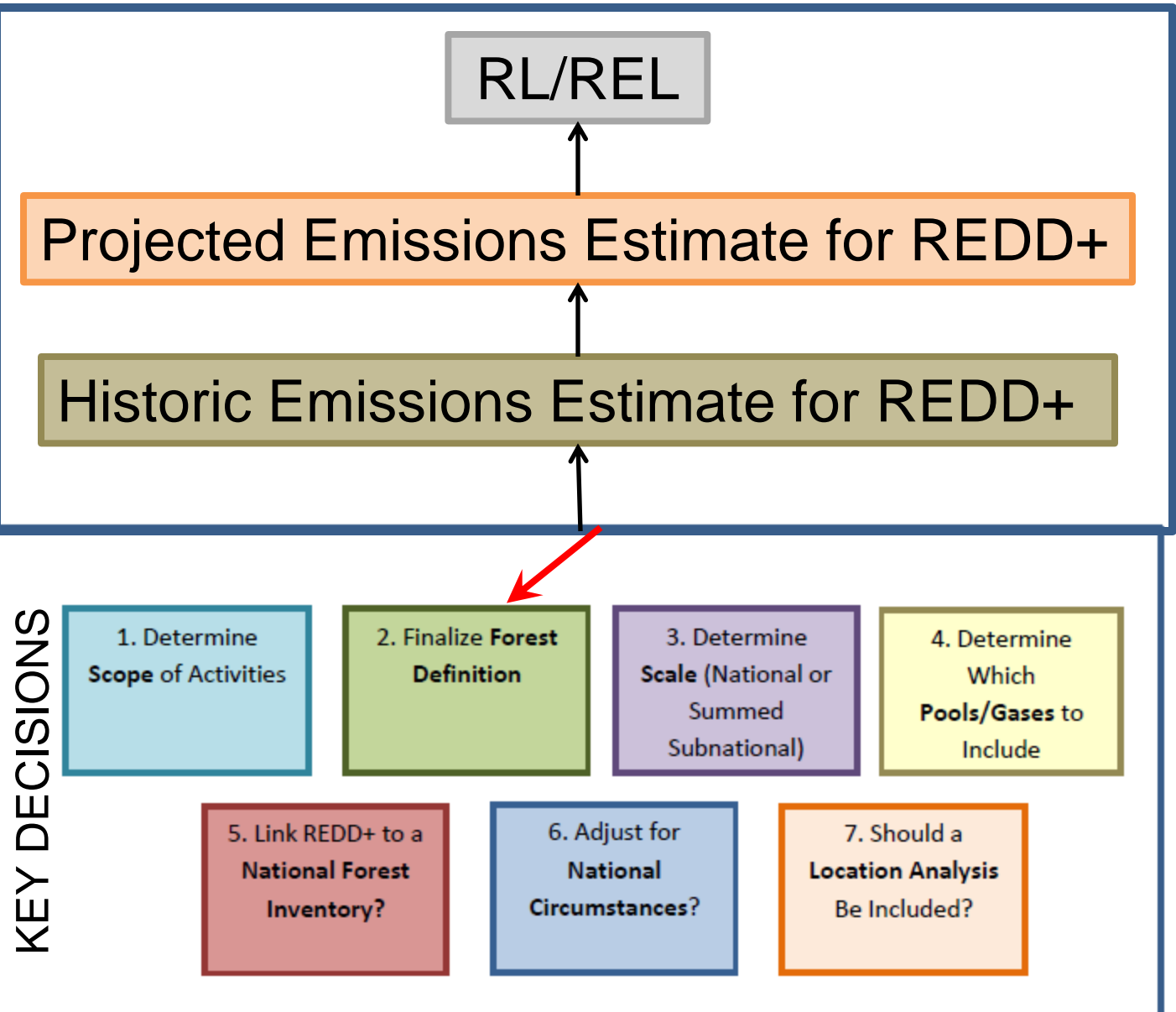
Need to collect data before
magnitude of GHG impacts
can be estimated

Automated Quantitative Tools

- Link readily available information to first order estimate of emissions
- Rapidly assess what makes sense to include in RL/REL
- Can break down subnationally
- Sensitivity analysis on REDD+ intervention programs



Draft RL/REL Framework

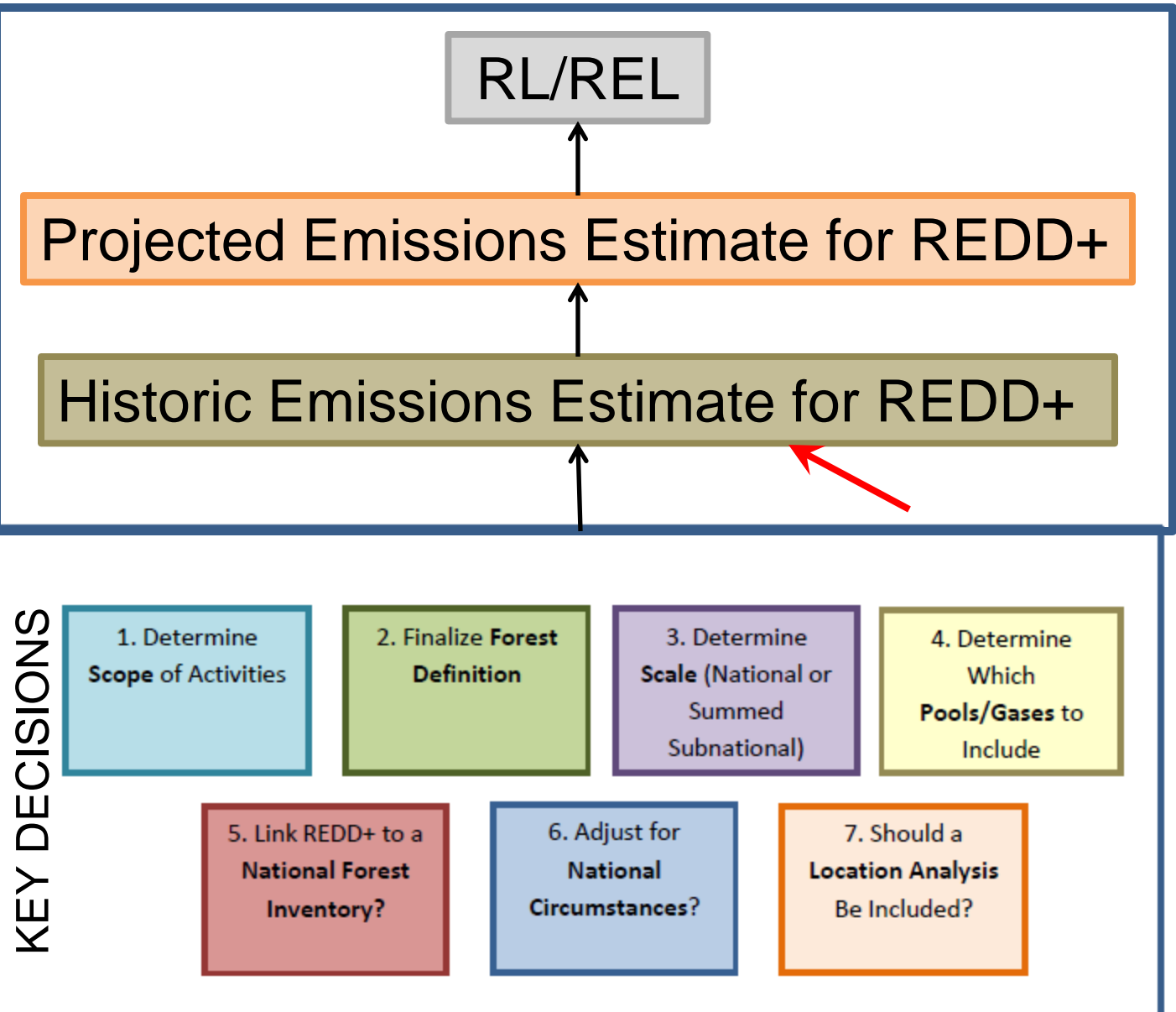


2. Finalize Forest Definition

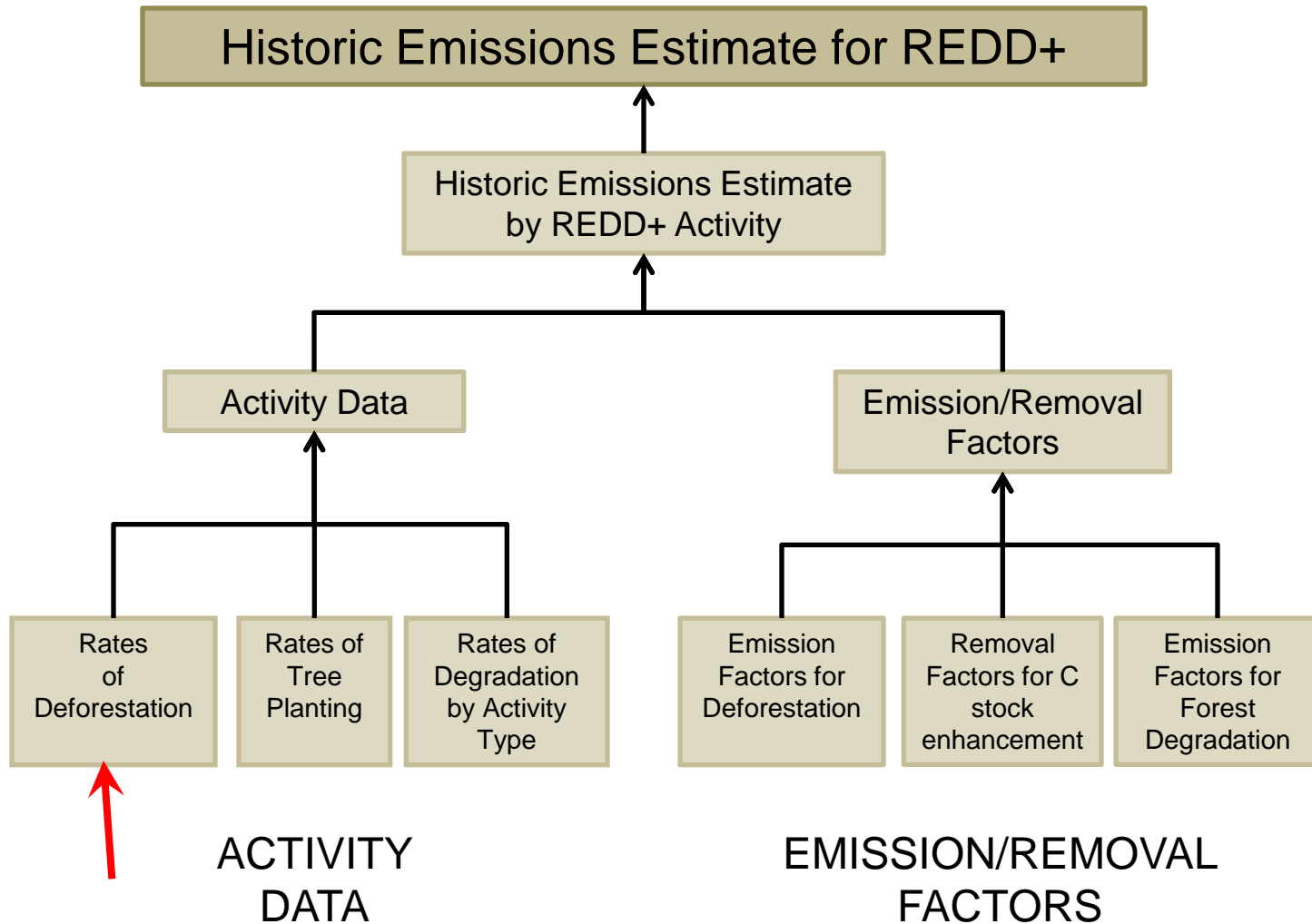
- Does a national definition already exist?
- Should it be changed for REDD+ purposes?
- One national definition or can it vary subnationally?
- What parameters should be used to define forests?
- Select definition that maximizes forest in the country?
- How does the selection of REDD+ activities affect the forest definition?



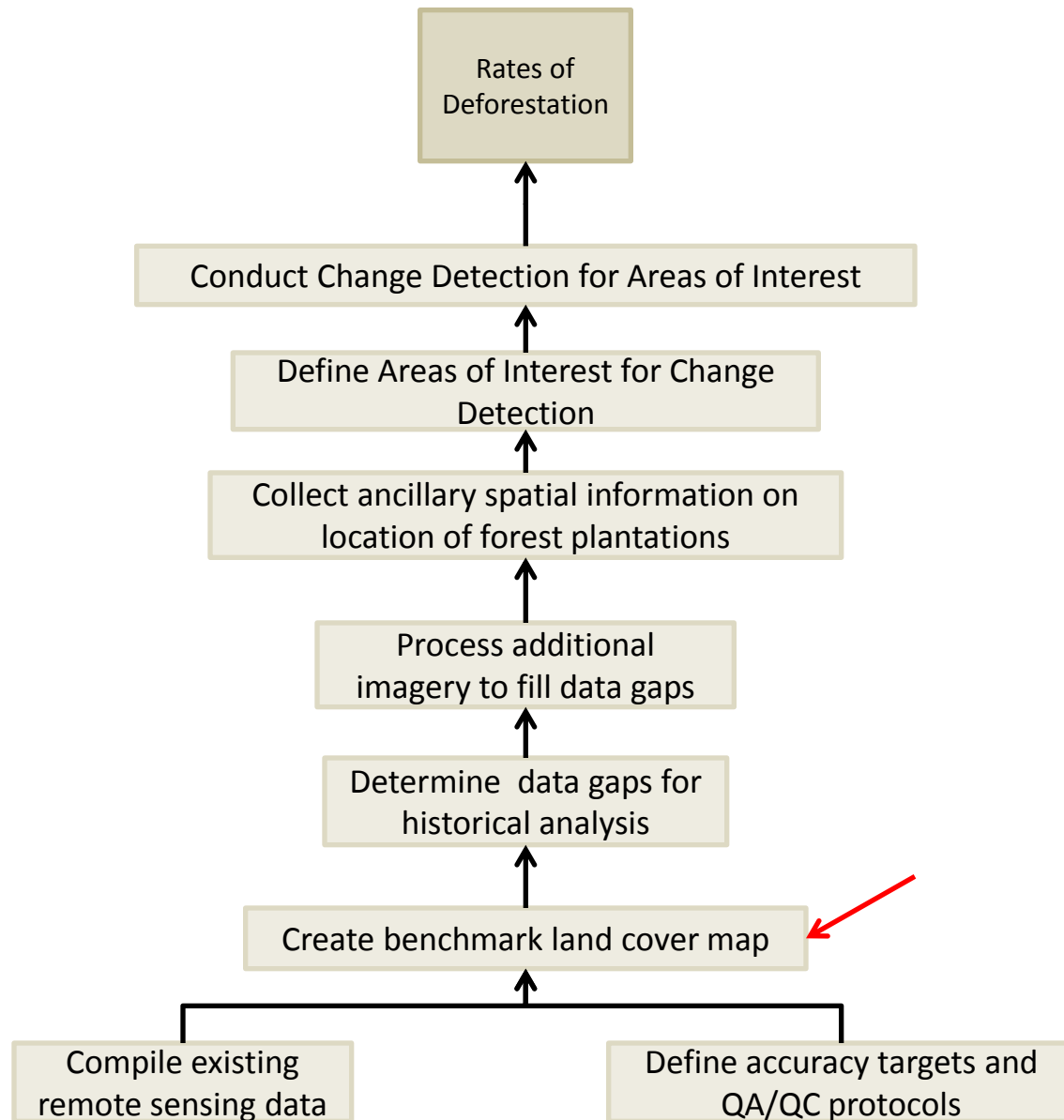
Draft RL/REL Framework



Historic Emissions Estimate for REDD+



Quantifying Rates of Deforestation



Guidance Text

Create benchmark land cover map

Required Capacity:

- Checklist of human and technological resources necessary to carry out the work

Data Sources:

- Links to websites where remote sensing data can be downloaded

Additional Information:

- Links to further guidance on this step

Overview of technical steps:

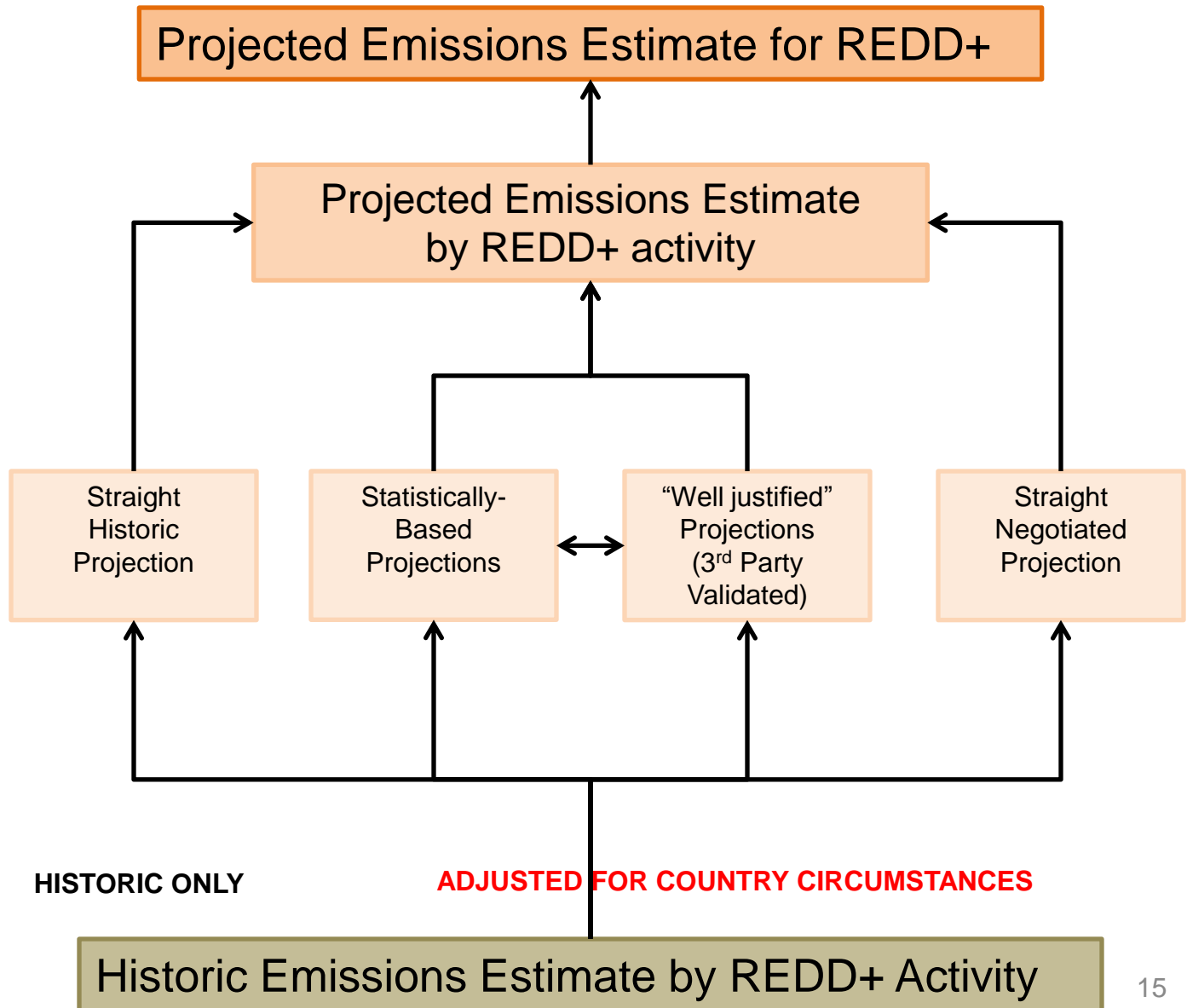
Step 1: *Determine appropriate benchmark year.* The year of the benchmark map will be determined by the decision made regarding the time period for historic analysis.

Step 2: *Determine appropriate imagery source.* This decision will be affected by which data source has the best coverage for the area of interest, least cloud contamination and data gaps, in-country capacity for processing the type of imagery considered, etc.

Step 3: *Select method of imagery interpretation.* This decision will be affected by the training and software requirements, replicability of results, accuracy, validation plan, etc.



Projected Emissions Estimate for REDD+



Draft RL/REL Framework



KEY DECISIONS

1. Determine
Scope of Activities

2. Finalize **Forest**
Definition

3. Determine
Scale (National or
Summed
Subnational)

4. Determine
Which
Pools/Gases to
Include

5. Link REDD+ to a
National Forest
Inventory?

6. Adjust for
National
Circumstances?

7. Should a
Location Analysis
Be Included?

Projected Emissions Estimate for REDD+

Historic Emissions Estimate for REDD+

RL/REL

Next Steps

- Solicit country feedback
- Build out rest of methodological framework
- Develop automated tools for first order approximations of emissions/removals
- Convert to web or software interface
- Test framework with country input

