

Partners

The Hariyo Ban program supports the broader conservation and development objectives and strategies of the Government of Nepal, and will work closely with Government in program implementation. It brings together the expertise and experience of international and national NGOs in the field of biodiversity conservation, climate change, community livelihoods and governance. The program is led by a consortium of four core partner organizations – World Wildlife Fund (WWF), Cooperative for Assistance and Relief Everywhere (CARE), Federation of Community Forestry Users in Nepal (FECOFUN) and the National Trust for Nature Conservation (NTNC) – with WWF serving as the managing partner for the program. The program will also harness the capacities of local communities and several national and international resource partners from academia, media, indigenous groups and private sector.

WWF-Nepal

WWF is one of the world’s leading conservation organizations, working in 100 countries for half a century. WWF has been active in Nepal since the 1960s. WWF’s work in Nepal has focused in the Terai Arc Landscape and Sacred Himalayan Landscape, including Koshi River Basin. WWF-Nepal works to conserve key species, forests and freshwater, and to reduce the impacts of climate change on communities, species and ecosystems. The effective delivery of conservation results under the above thematic areas are supported by crosscutting programs on policy and advocacy, sustainable livelihoods, communications, and education.

CARE Nepal

CARE is a leading relief and development non-governmental organization fighting global poverty. It has been working in Nepal since 1978. Today it operates in 36 districts, with a major focus on the mid and far-western regions, through 17 community development programs and national initiatives. Its work in Nepal covers several thematic areas including community forestry, watershed management, biodiversity conservation, community-based biodiversity monitoring, climate change adaptation, emergency response and disaster risk reduction, advocacy and policy engagement and civil society strengthening, good governance, and increasing participation levels of poor, Dalits and women’s groups in decision making. WWF and CARE have a long history of partnerships in various developing countries including Borneo, Galapagos, Mozambique, Tanzania and Nepal.

National Trust for Nature Conservation

National Trust for Nature Conservation (NTNC) was established in 1982 by a legislative act with a mandate to work in the field of biodiversity conservation in Nepal. NTNC has successfully carried out over 200 projects mainly on nature conservation, biodiversity, cultural heritage, ecotourism, and sustainable development. WWF’s partnership with NTNC dates back to its inception with WWF playing a key role in its conservation activities including the Annapurna Conservation Area Project. NTNC works in various protected areas from the sub-tropical plains of Chitwan, Parsa, Bardia and Kanchanpur in the lowlands to the Annapurna, Manaslu and Gaurishankar region of the high Himalayas, including the trans-Himalayan region of Upper Mustang and Manang. It is also managing the only zoo of Nepal located in Kathmandu valley.

Federation of Community Forestry Users, Nepal (FECOFUN)

The Federation of Community Forestry Users, Nepal (FECOFUN) was formed in 1995 with a vision to create a formal network of forest users from all across Nepal to strengthen their role in advocacy and policy making. Today FECOFUN has grown into a social movement with about 8.5 million forest users from different corners of Nepal. It is also supported by thousands of volunteers and community forestry facilitators and national and international organizations. Advocacy is central to FECOFUN’s effectiveness as a representative of forest-users concerns, nationally and locally. WWF and CARE have worked with FECOFUN since 2002 in past projects such as SAGUN.

HARIYO BAN

Nepal is a small country occupying only 0.03% of the earth’s land but is sumptuously diverse in topography ranging from 70 to 8,848 meters above sea level<sup>1</sup>. It boasts 118 ecosystems, 75 types of vegetation and 35 types of forests. Nepal enjoys a rich cultural heritage with over 100 different ethnic groups making up a population of around 26.6 million people<sup>2</sup>. Unfortunately, despite Nepal’s wealth in natural resources poverty is widespread with about 25%<sup>3</sup> of the population living below the poverty line and a large proportion of people living in rural areas. The rural poor who have few assets are heavily dependent on forests and subsistence agriculture for their livelihoods. Poverty and lack of alternative livelihoods are driving poaching and illegal timber harvesting, placing increasing pressure on natural resources. Today climate change is seen as a major threat to people and biodiversity with 1.9 million people being vulnerable and 10 million in potential danger<sup>4</sup>. In sum, with escalating poverty, climate change and environmental degradation, both humans and biodiversity are at risk.



The Hariyo Ban program is made possible by the generous support of the American people through the United States Agency for International Development (USAID). The contents of this leaflet are the responsibility of the Hariyo Ban program and do not necessarily reflect the views of USAID or the United States Government.







© Michel Gunther / WWF-Canon

## Expected Program Outcomes

- Threats to focal species from poaching, human wildlife conflict & habitat loss reduced
- Habitat connectivity restored, climate refugia and corridors under conservation management
- Internal governance of community groups strengthened
- Local stewardship of community forests improved
- Livelihoods of forest dependent communities improved
- Policies for REDD+ strengthened, formulated and executed
- Effective social & environmental safeguards established & demonstrated
- Benefit sharing mechanism developed and tested
- Rate of deforestation and forest degradation minimized
- Payment scheme for carbon credit developed and tested
- Understanding of climate change impacts, vulnerability & adoption increased
- Adaptation approaches piloted and expanded
- Participatory vulnerability monitoring system developed & piloted
- Capacity for biodiversity conservation, landscape management and climate adaptation developed from local to national level
- Support provided for improved policies, strategies and guidelines for sound climate adaptation

## About the Hariyo Ban Program

The Hariyo Ban program is an ambitious initiative designed to benefit nature and people in Nepal. It aims to reduce adverse impacts of climate change and threats to biodiversity, by restoring and conserving forests while improving livelihoods, and building resilience to climate change in both people and ecosystems. It works on three core interwoven components – biodiversity conservation, sustainable landscapes and climate adaptation – with livelihoods, gender and social inclusion being important cross-cutting themes. This five-year program has been made possible with a generous grant of approximately USD 30 million through the United States Agency for International Development (USAID).

The program finds its inspiration from the popular saying ‘Hariyo Ban Nepal Ko Dhan’ (Healthy green forests are the wealth of Nepal) which emphasizes the links between people and forests that underpins the project’s approach.

## Program Objectives

- To reduce threats to biodiversity in target landscapes;
- To build the structures, capacity and operations necessary for an effective sustainable landscape management, especially reducing emissions from deforestation and forest degradation (REDD+) readiness; and
- To increase the ability of targeted human and ecological communities to adapt to the adverse impacts of climate change.

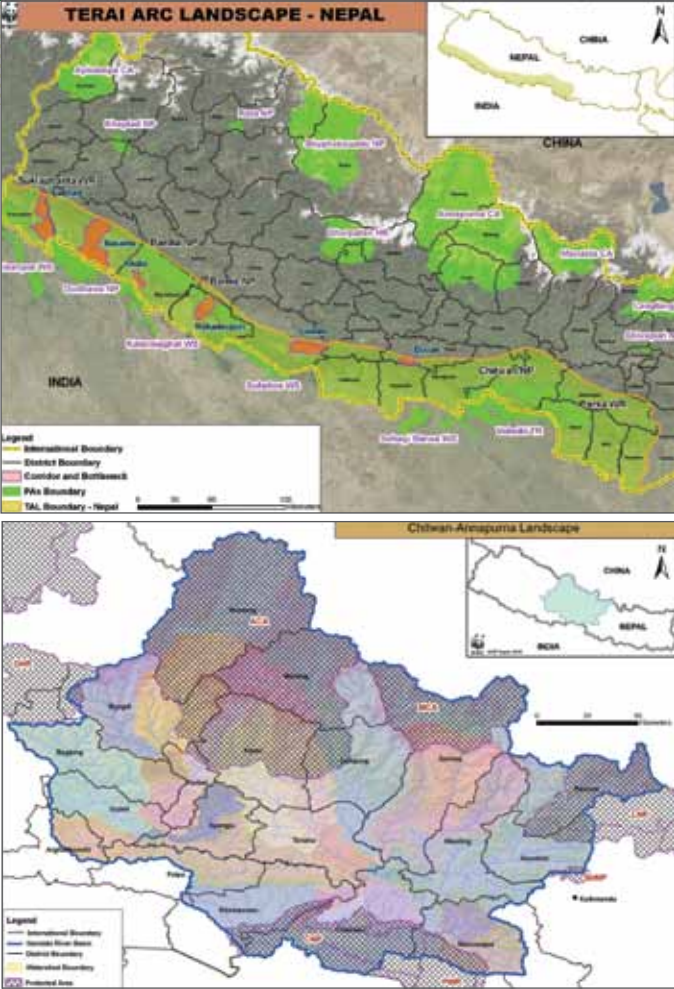
The Hariyo Ban program strategically prioritizes two landscapes that are critically important for ensuring effective conservation and sustainable livelihoods in Nepal – Terai Arc Landscape (TAL) and Chitwan-Annapurna Landscape (CHAL).

## Working Areas

The Terai Arc Landscape (TAL) is inhabited by the highest surviving population of Bengal Tiger and second largest density of Greater One-horned Rhinoceros in the world. It supports the world’s tallest grasslands, riverine and hardwood Sal forests and is one of the biologically important regions on earth. The Terai is often referred to as the rice bowl of the country, and TAL has a population of about 6.7 million<sup>5</sup> people from several ethnic groups, many of them migrants from other places. This new mix of indigenous people and migrants has led to weaker social cohesion and community organization than in hills, with high discrimination based on gender, caste and ethnicity. Poverty is also high in this region particularly amongst the indigenous Tharus, the Dalits and the ex-Kamaiyas. A study of seven TAL-Nepal districts shows that 71% of the populations do not grow sufficient food to last through the year<sup>6</sup>.

The Hariyo Ban program plans to focus initially in the TAL districts of Kanchanpur, Banke, Kailali, Bardiya, Rautahat, Bara, Parsa, Chitwan and Nawalparasi.

The Chitwan-Annapurna Landscape (CHAL) is another biologically important region in Nepal with valuable watersheds containing high habitat diversity along north-south altitudinal gradients, and key areas for migratory birds. It extends down from the Annapurna and Manaslu Conservation Areas south through the mid-hills to connect with the Chitwan National Park through the Barandabhar forests. This area has ethnic groups such



as Gurung, Thakali, Magar and Manangba. Parts of the area have high climate vulnerability<sup>7</sup> and poverty rates<sup>8</sup>. The program will initially focus in seven of the 19 CHAL districts in the Kali, Seti and Marsyandi river basins, namely Mustang, Chitwan, Kaski, Tanahu, Manang, Lamjung, and Gorkha.

<sup>1</sup> District Development Profile of Nepal (A Socio-Economic Development Database of Nepal),(2010/1011)

<sup>2</sup> Central Bureau of Statistics, 2011a

<sup>3</sup> Central Bureau of Statistics, 2011b

<sup>4</sup> National Adaptation Program of Action (2010). Ministry of Environment, Government of Nepal

<sup>5</sup> WWF Nepal (2006), Demographic Analysis of Terai Arc Landscape – Nepal

<sup>6</sup> Terai Arc Landscape – Nepal; Strategic Plan (2004 -2014). Ministry of Forest and Soil Conservation, Kathmandu

<sup>7</sup> National Adaptation Program of Action (2010). Ministry of Environment, Government of Nepal, Kathmandu.

<sup>8</sup> Nepal Human Development Report (2004). UNDP