

# **Sustainable use and protection of high conservation values in common lands of Santiago del Estero**

Ulises Martinez Ortiz  
Fundación Vida Silvestre Argentina



**HCV** HIGH CONSERVATION VALUE  
*resource network*

(<http://www.hcvnetwork.org>)

ForestEthics, Forest Peoples Programme, FSC, Greenpeace International, International Tropical Timber Organization (ITTO), MONDI, Tetra Pak, TNC, World Bank, World Business Council for Sustainable Development, IUCN, WWF

## Advantages:

- Accepted and known by international institutions
- Easy to assess
- Suitable for different scales (from management unit to landscape)







(<http://www.hcvnetwork.org>)

**Conservation values are classified in 6 different scales and approaches:**

- Species
- Landscape
- Ecosystems
- Ecological services
- Resources for local population livelihood
- Important sites for cultural identity





## High Conservation Values

**HCV 1:** Areas containing globally, regionally or nationally significant concentrations of biodiversity values

1.1 Protected areas

1.2 Threatened and endangered species

1.3 Endemic species

1.4 Critical temporal use



**AVC 2:** Significant large landscape-level areas where viable populations of most if not all naturally occurring species exist in natural patterns of distribution and abundance.

**AVC 3:** Areas that are in or contain rare, threatened or endangered ecosystems.





## High Conservation Values

**AVC 4:** Areas that provide basic ecosystem services in critical situations .

4.1 Natural areas critical for water catchment

4.2 Natural areas critical for erosion control

4.3 Natural areas providing barriers to destructive fires



**AVC 5:** Natural areas fundamental to meeting basic needs of local communities



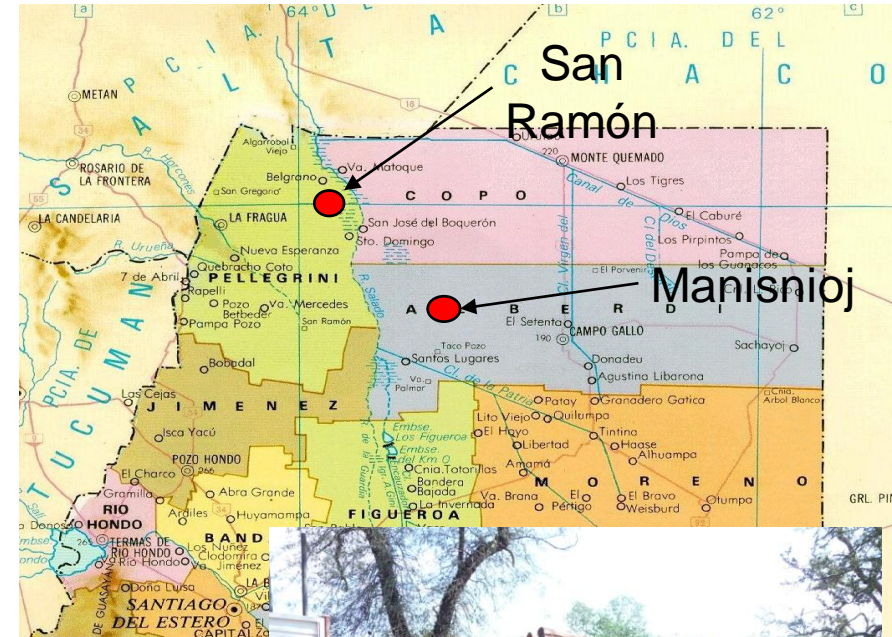
**AVC 6:** Areas critical to local communities' traditional cultural identity





# Project: Sustainable use planning and HCV protection in common lands of Santiago del Estero

**Objective:** To develop a participative planning in a common land of Santiago del Estero with the aim of improve life quality of local population, preserve high conservation value areas and constitute an alternative development model in region of current conversion to commercial agriculture.





## Project: Sustainable use planning and HCV protection in common lands of Santiago del Estero

### Activities:

1. Ecological zoning based on HCV concept
2. Participative land use planning based on ecological zoning
3. Capacity building and investments to implement the plan





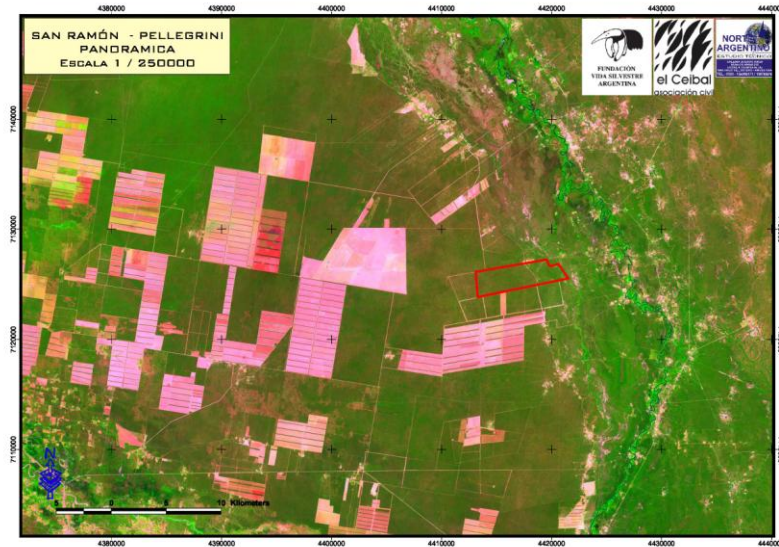
HCV 1. Species: Oso hormiguero, oso melero, puma, pecarí de collar y pecarí quimilero are present in both communities.





## HCV 2. Landscape:

Manisnioj is part of a continuous forest landscape of more than 50000 ha. San Ramón does not.



**HCV 3. Ecosystems:** Palm community out of its distribution area (*Tritrinax campestris*)

**HCV 4. Ecological services:** Eolic erosion protection (north and south winds).





## HCV 5. Social values:

**Food:** Algarroba, mistol, honey (10 species), tuna, chañar and fauna (12 species). Almost once a week.

**Fuel:** Firewood. The only source of energy in the area. They use approximately 65 m<sup>3</sup>/año per family.

**Furniture's and construction.**

**Medicines:** Jarilla, vinal, atamisqui, mistol, poleo, tusca, moye, etc. The nearest pharmacy is at 70 km.

**Feed:** Quenti, guayacán, ancoche, tala, algarroba y mistol

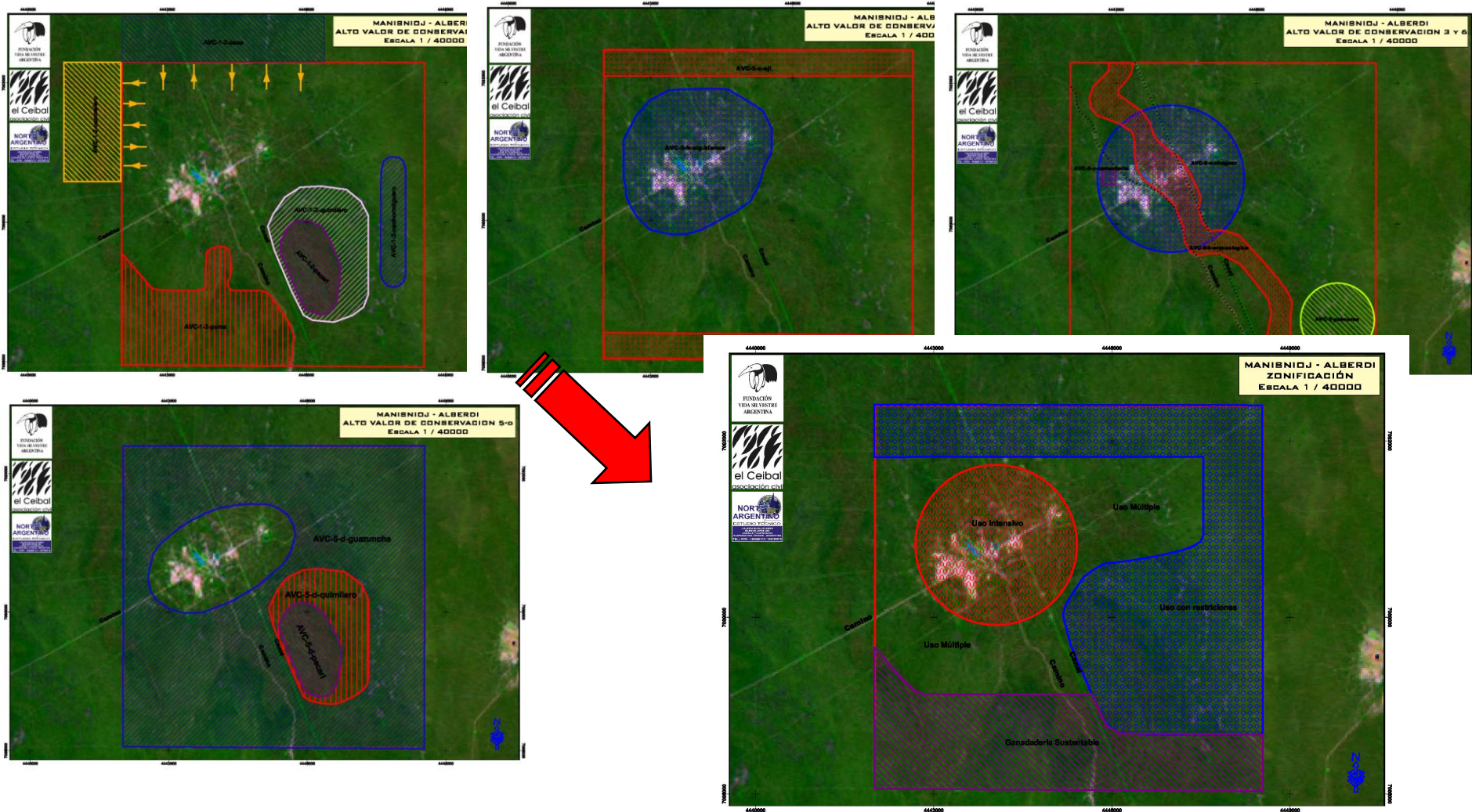
## HCV 6. Cultural values:

- There is an old stone mill apparently used for wheat in San Ramón.
- In Manisnioj have been found ceramics and an indigenous sepulture. There is a community cemetery of more that 150 years old.
- Chaguar and palm fibers traditionally used for ropes and basketwork





# Zonning



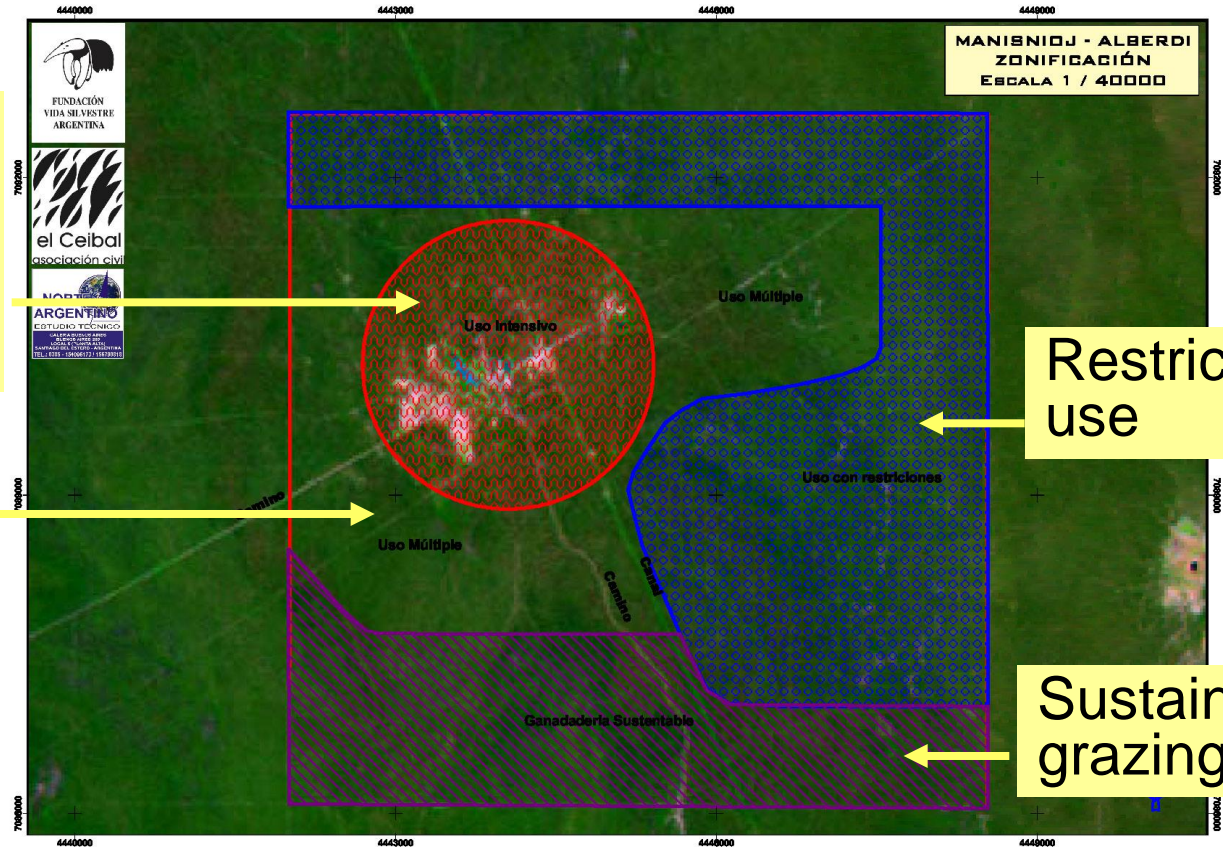


Intensive use,  
firewood  
supplies,  
archeological  
sites

Multiple  
sustainable  
use

Restricted  
use

Sustainable  
grazing





## Livestock management

1st year: improve sanitary standard of bovine herd, facilities improvement.

2nd year: first market experiences

5th year: livestock managed



## Apiculture

To install a apicultural module of 50 beehive and to develop capacity building for it management.





## Traditional carpentry

To recover traditional carpentry techniques and designs, in order to adding value (economic and cultural) to wood resources, and reduce timber pressure.





# Muchas Gracias!

Ulises Martinez Ortiz  
[ulises.martinez@vidasilvestre.org.ar](mailto:ulises.martinez@vidasilvestre.org.ar)

