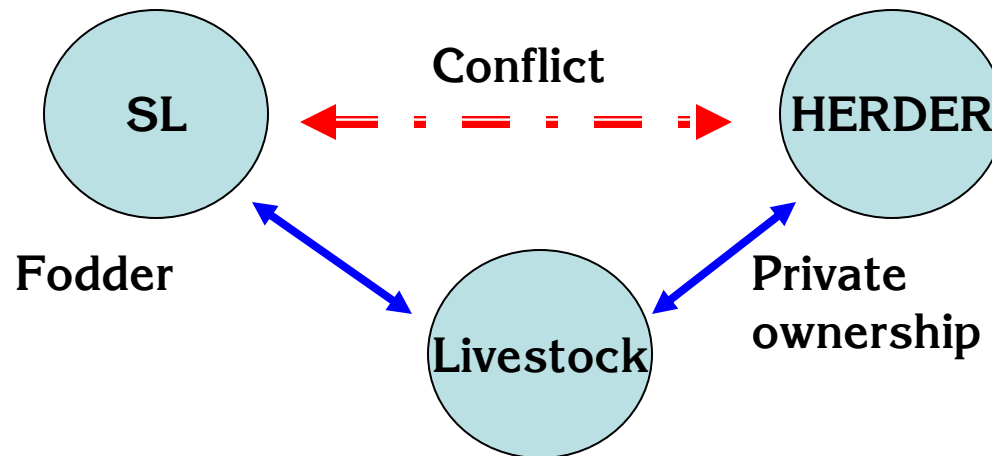


Conflict between herders and Snow leopards

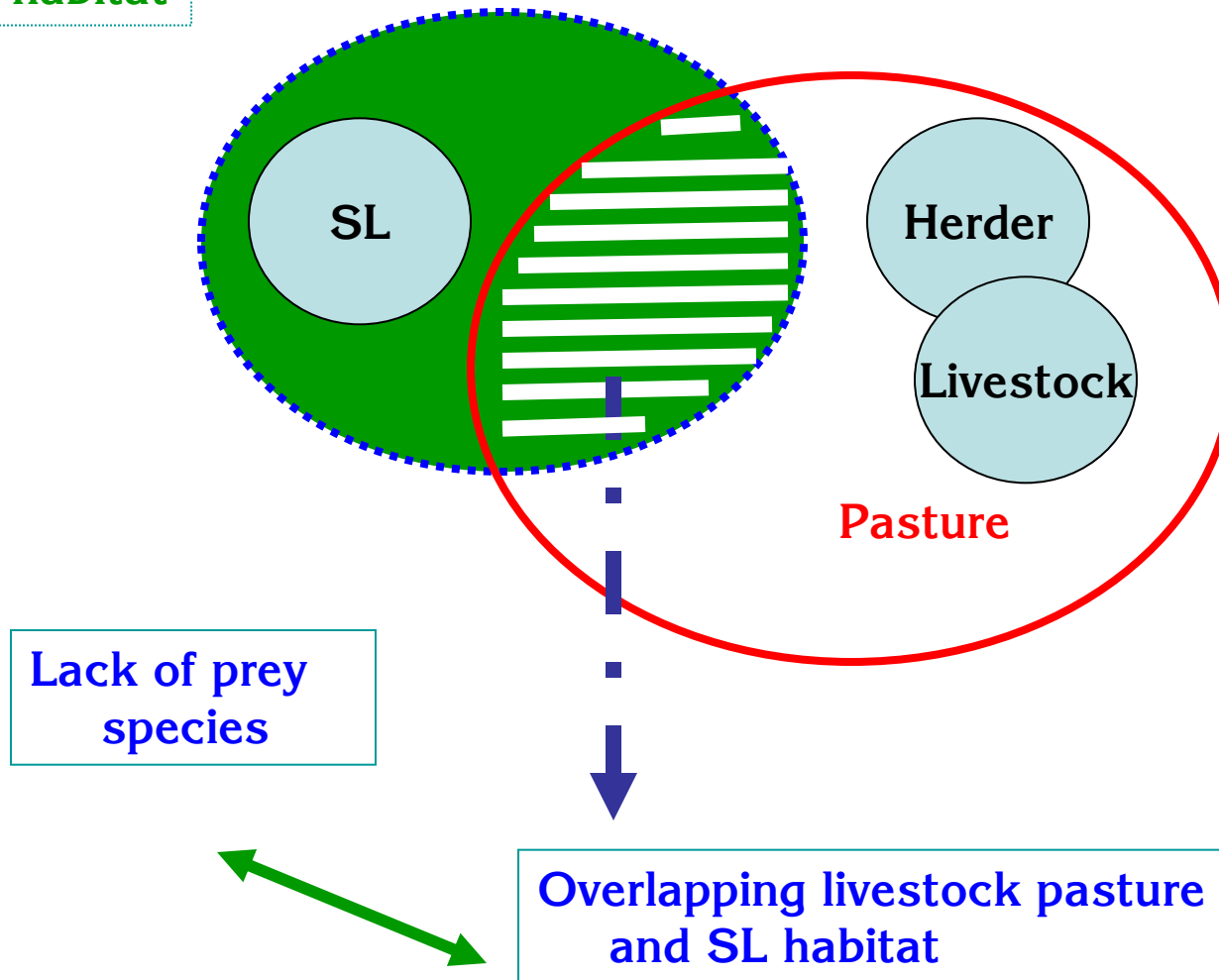
1. There is actually serious conflict between SL and Herders in Mongolia



The conflict = Livestock husbandry in Mongolia

Cause of conflict

SL habitat



Attitude of herders



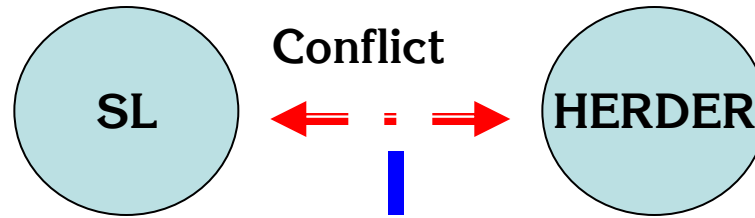
Positive attitude

- The God taken as usual,
- The God fancy,
- Have been feed many years SL,
- It is said that killing SL is black art

Negative attitude

- To avenge for killing
- Poaching or killing

It is needed to solve problems raised by conflict between herders and SL



Decreasing issues

1

Community based monitoring and entertainment activities

2

Public awareness and communications

3

Protect under PAs

4

Herder community involvement for conservation

5

Buy Goat programme



Potential habitats of representative species and communities in Altay Sayan Ecoregion



**Buy Goat programme
2007**

R U S S I A

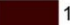
C H I N A


Legend

 State boundary

 Ecoregion

Species and communities overlays

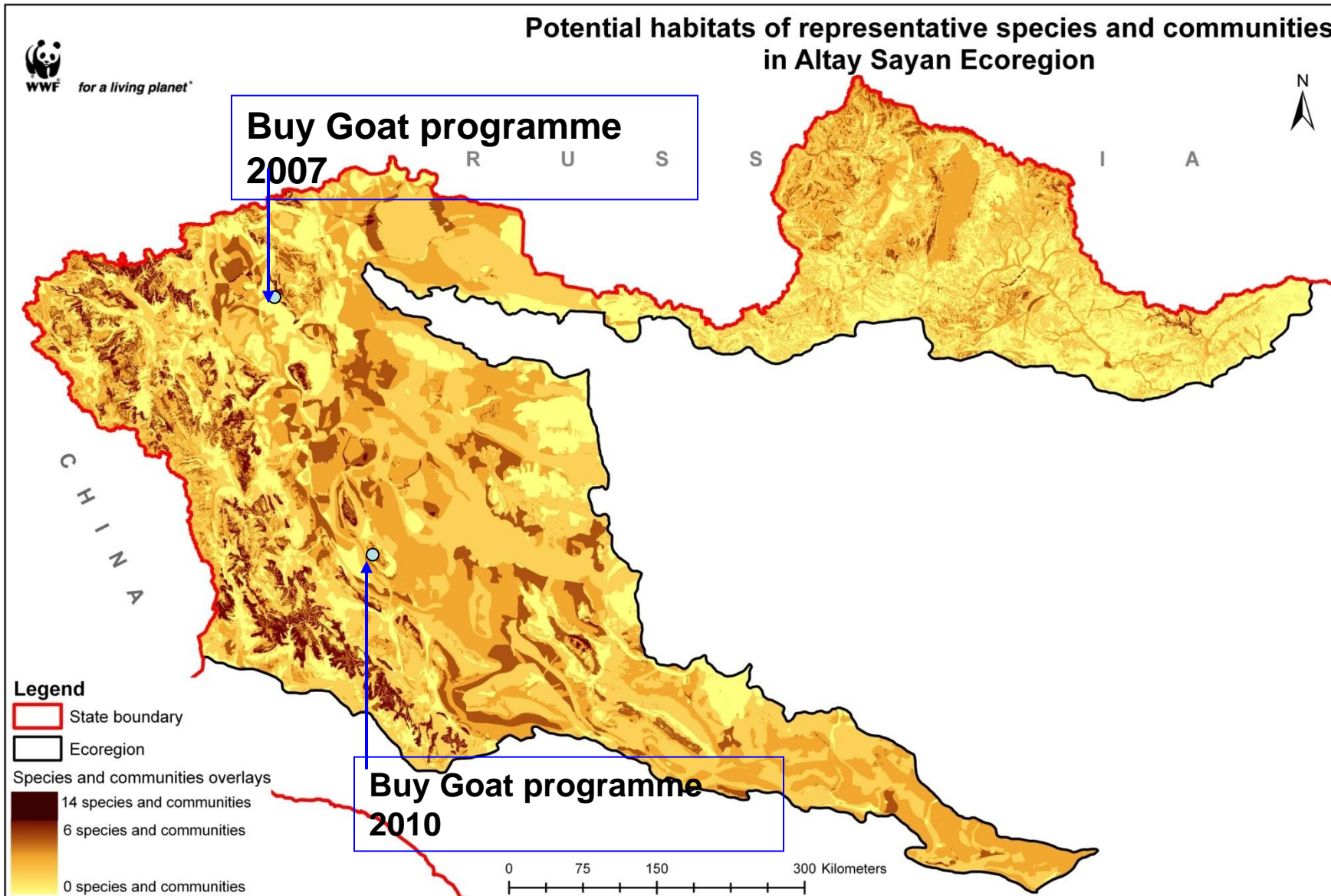
 14 species and communities

 6 species and communities

 0 species and communities

**Buy Goat programme
2010**

0 75 150 300 Kilometers

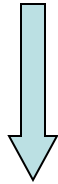


1. Uvs Aimag, Khovd Soum-2007

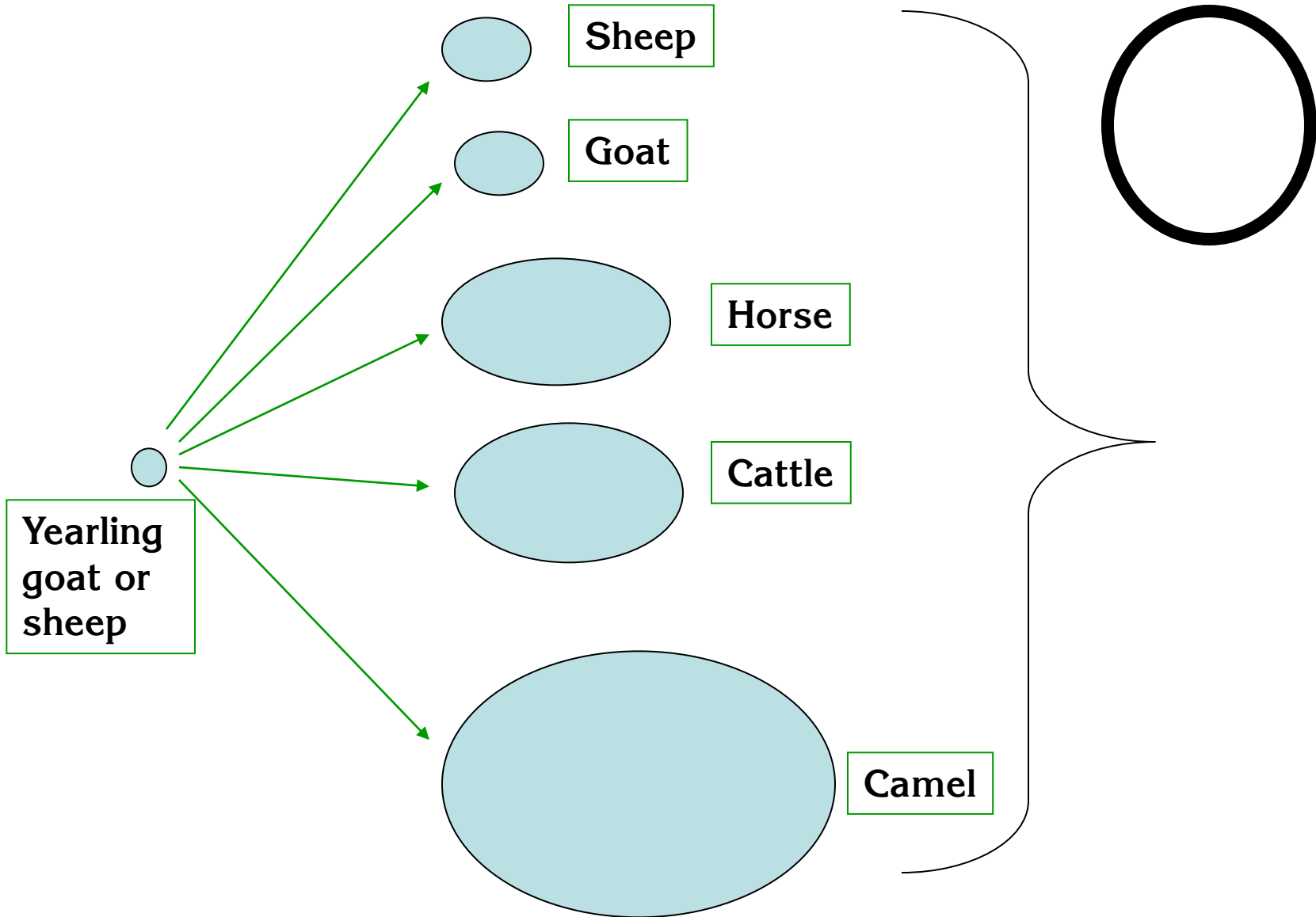
2. Khovd Aimag, Zereg Soum-2010

Contract with herders in SL habitat

Verification council



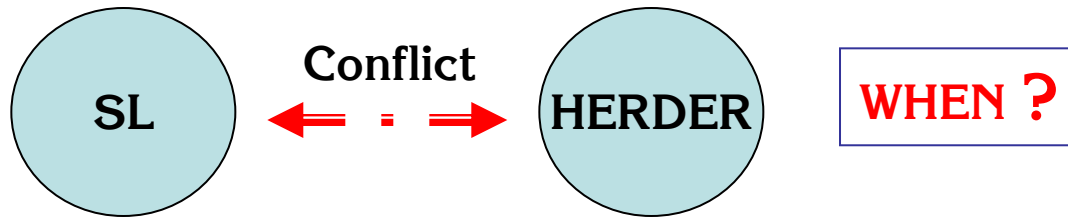
- Photo camera**
- GPS**
- Stationary**



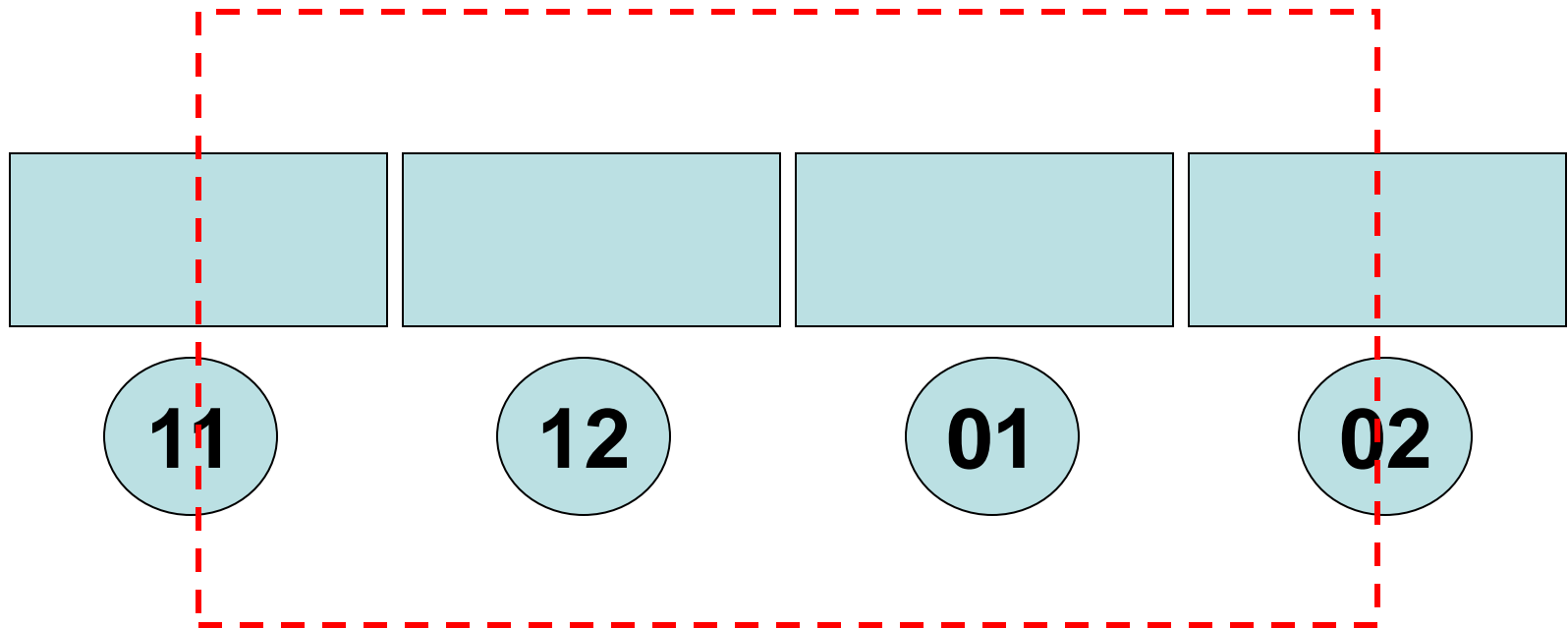
Verification process of SL killing

Verification council

1. Inform the case to verification council (from herders)
2. Visit in the site (car, horse and walking)
3. Evidence with photo camera and GPS location
4. Protocol for the case
5. Send to decision makers



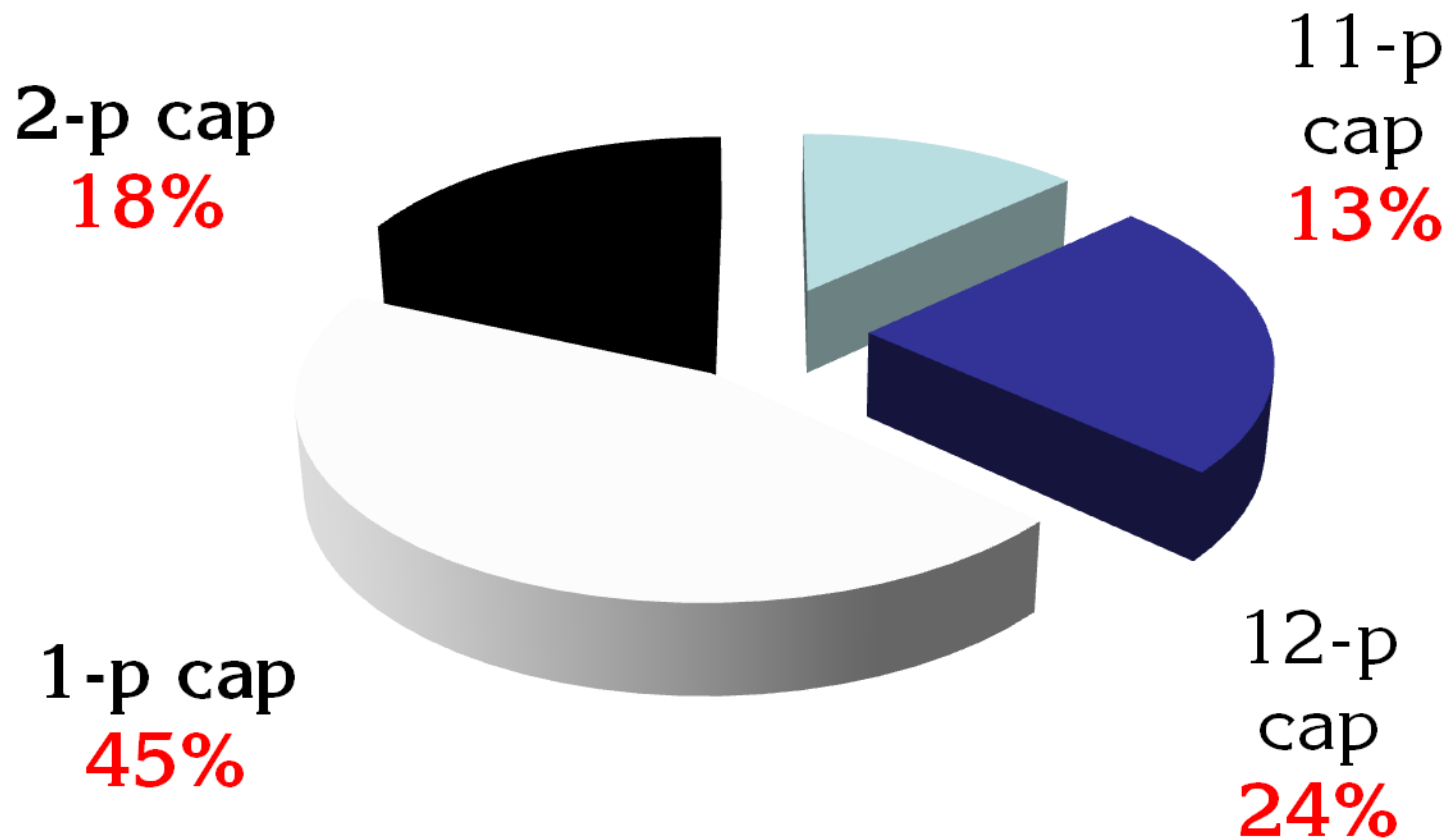
IS THIS ALL YEAR ROUND?



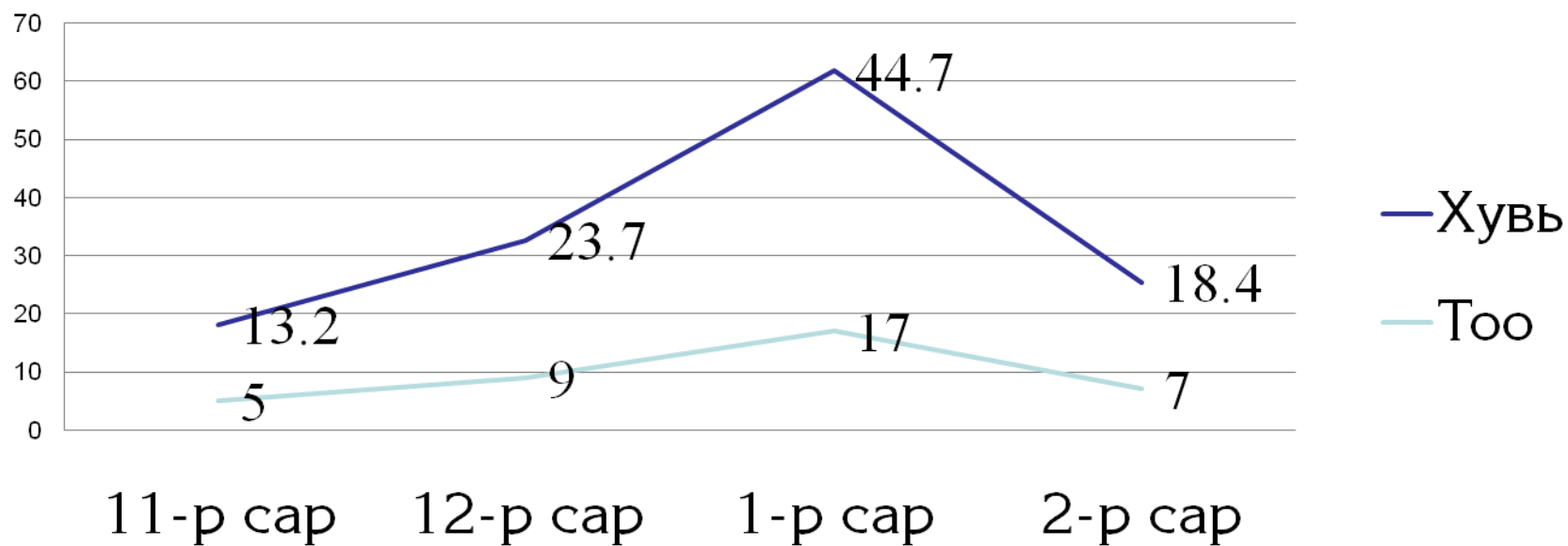
When SL eat livestock?

Winter

Livestock eaten by SL (by month)



Livestock eaten by SL (by month)



Do they catch livestock in other season except winter?

Accidental

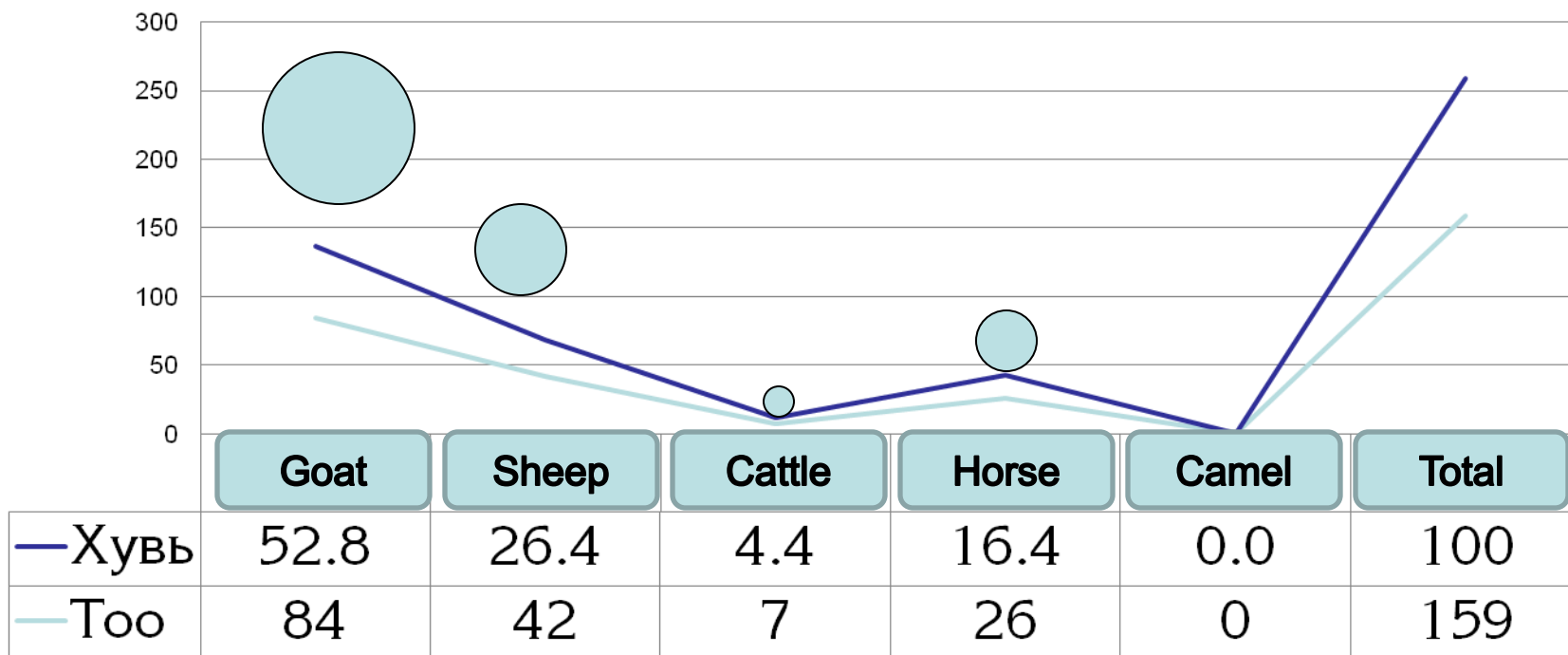
- Livestock herding without herder man – Yak and Horse



2009-07-03 Jargalant Mountain

Which kind of livestock killed by SL?

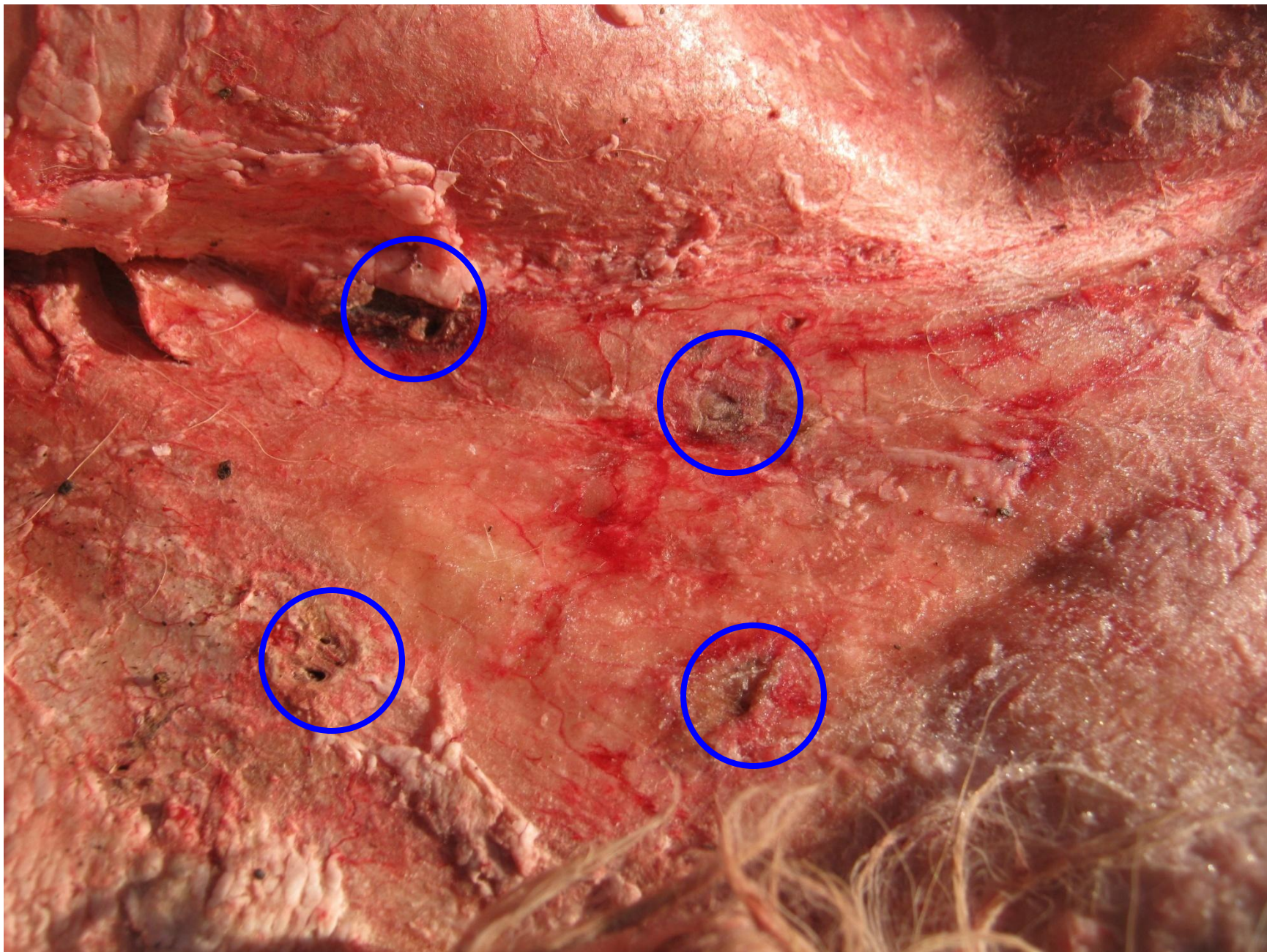
Livestock eaten by SL (by type)























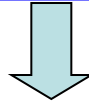




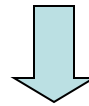




Bumbatkhairkhan Mountain



**2010 December
2011 January**



14 Sheep

Thanks for your attention!

Dr Munkhtogtokh.O
Ulaanbaatar, 2011-10-17

Altai Sayan Field office, WWF Mongolia Programme Office.