

# Community based conservation of snow leopards



Bayarjargal Agvaantseren  
Snow Leopard Conservation Foundation  
(SLCF)



# Snow leopard Conservation Foundation (SLCF)



Scientific Research  
& Monitoring



Community based  
conservation programs



# Community-Based Conservation Programs

Since 1999



Snow Leopard Enterprises (SLE)



Since 2009



Livestock insurance program





# *Threats to Snow leopard:*



• *Poaching for its wild prey*



• *Retaliatory kills*



• *Loss of habitat and wild prey*



# Snow Leopard Enterprises (SLE)





- How does it work?
- It all started with pennies for pounds...



# Skills trainings to add value to wool



- Spinning
- Felting
- Dyeing
- Embroidering



# From raw wool to marketable products



Snow  
Leopard  
Trust



# Product and Participant History

Years	1999	2000	2001	2002	2003	2004	2005	2006	2007	2008	2009	2010
Total number of products	352	514	1357	2719	4193	4600	6925	8848	9137	9125	9700	10100
Total number of participants	45	74	120	176	141	196	235	222	258	241	252	254

In 2010, communities' income from SLE products was USD 30,000



# Marketing SLE products today

## Mongolia:

- Tour camp shops



## US:

- Through Zoo stores in the USA
- Events
- Web sales
- Specialty stores





# Building Capacity



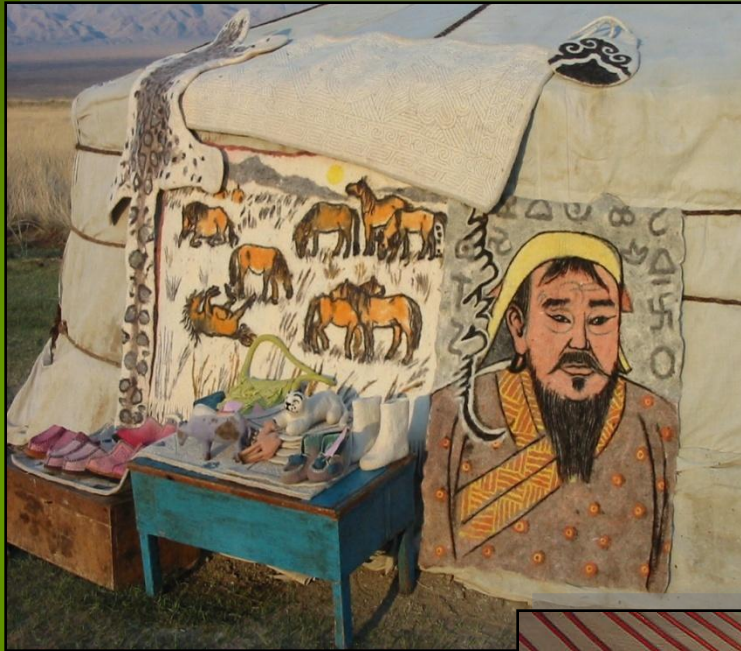
Toys for their children



Clothing for their personal use



# Creating Sustainability



Making souvenirs  
for tourists

Processing wool for  
felt homes at domesti  
market





# How does this impact the community members?

37 year old,  
married, has 4  
children between  
age of 1 - 14, lives  
in Bor Burgas,  
Tsengel soum, BU.



Her family has 15 goats,  
8 sheep and 2 horses



# Here is an example from Jamambai & her family

## *Before*

50 kg sheep wool = 7,500

3 kg raw cashmere = 75,000

**Total Income = 82,500**

## *Today*

Product Sales = 168,000

Conservation Bonus = 33,600

Raw Cashmere = 105,000

**Total Income = 306,600**

*With the SLE, Jamambai's income increased from 82,500 to 306,600. She continues to participate and has encouraged other families to participate and stop poaching.*







- This is how one household benefits...but this is the same story for about 300 women and their extended families...



Trust

# Other Benefits for Women

- Increased self esteem
- Improved image within family and community
- Engaged for 1<sup>st</sup> time in decision making for environment



*Income used for food, medicine,  
education, clothing, and a sense of pride.*







How does  
this help  
me?



# Jointly made conservation contract





# Conservation contract conditions



- No poaching of snow leopard and its prey
- Follow the Protected area laws and regulations

## Bonus :

- \* 20% bonus to *ALL* producers in the community if the community abides by the contract.
- \* If there is poaching or law violation entire community loses the bonus



# Does it work?



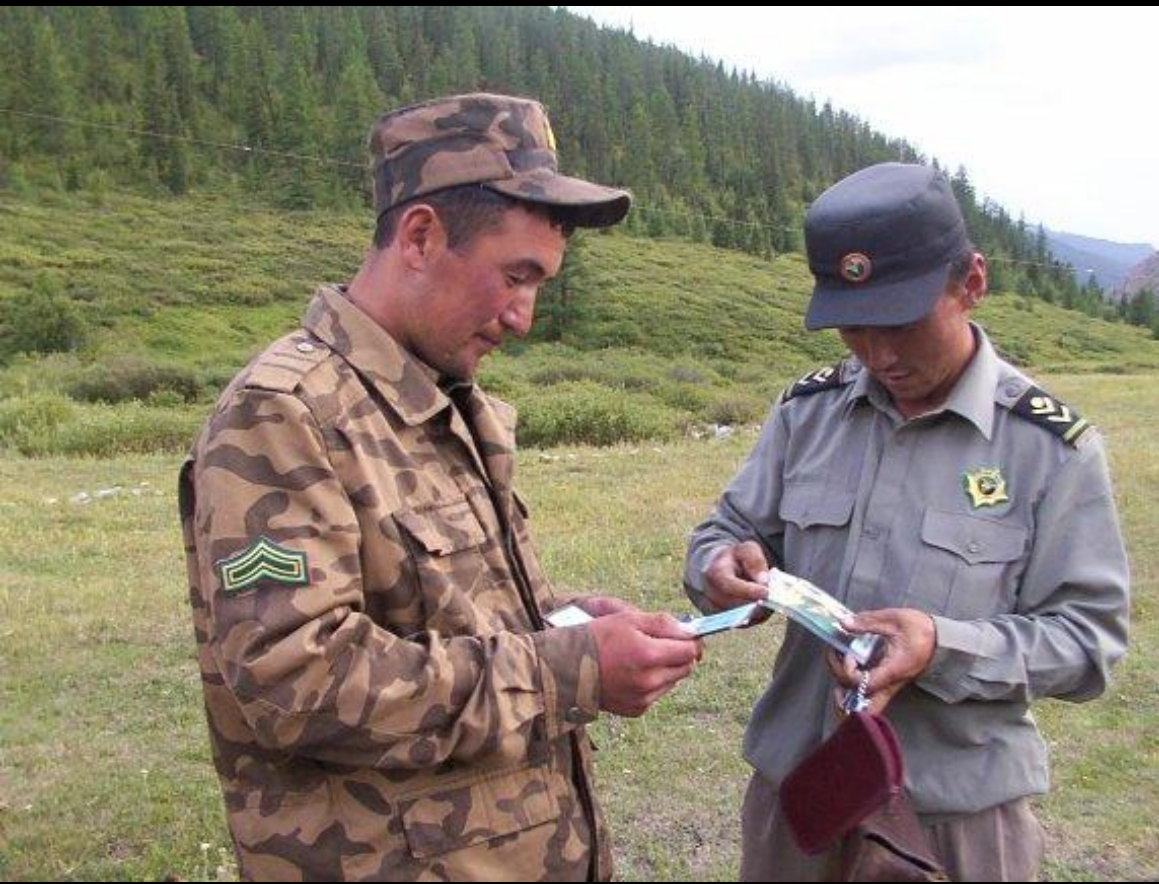
## Developing Threat Reduction Assessment (TRA)

- Creates peer pressure
- Changing attitude to snow leopards
- Sustainable income source
- Contributes to rural women's development
- Spread extensive amount of awareness





# Supporting local conservation initiative- Small grants

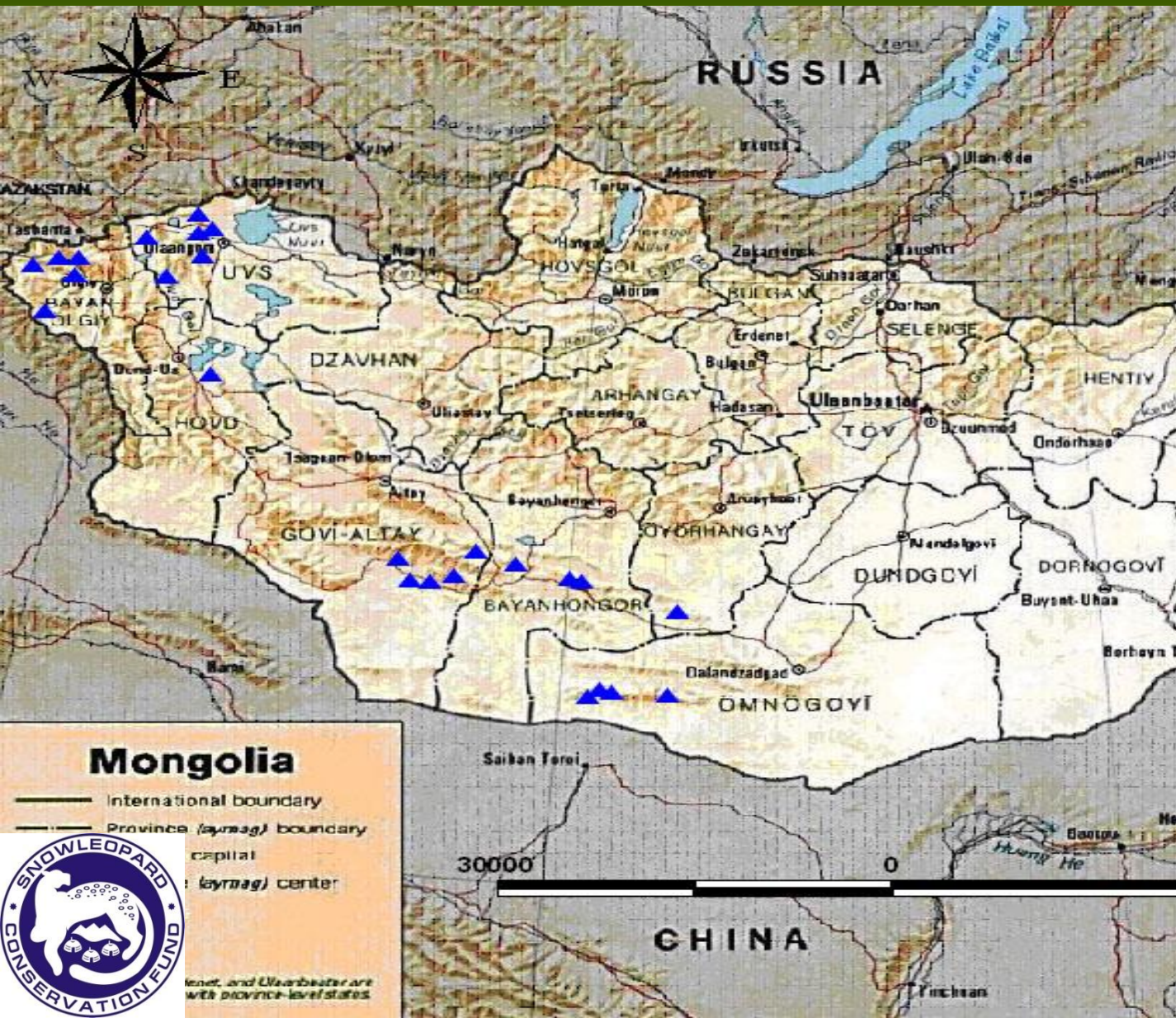


10% goes to  
supporting small  
conservation projects  
with USD 2500  
annually





# Where is SLE program in Mongolia?



Western 7 provinces

31 herder community groups

About 300 households & extended families



# Livestock insurance program since 2009



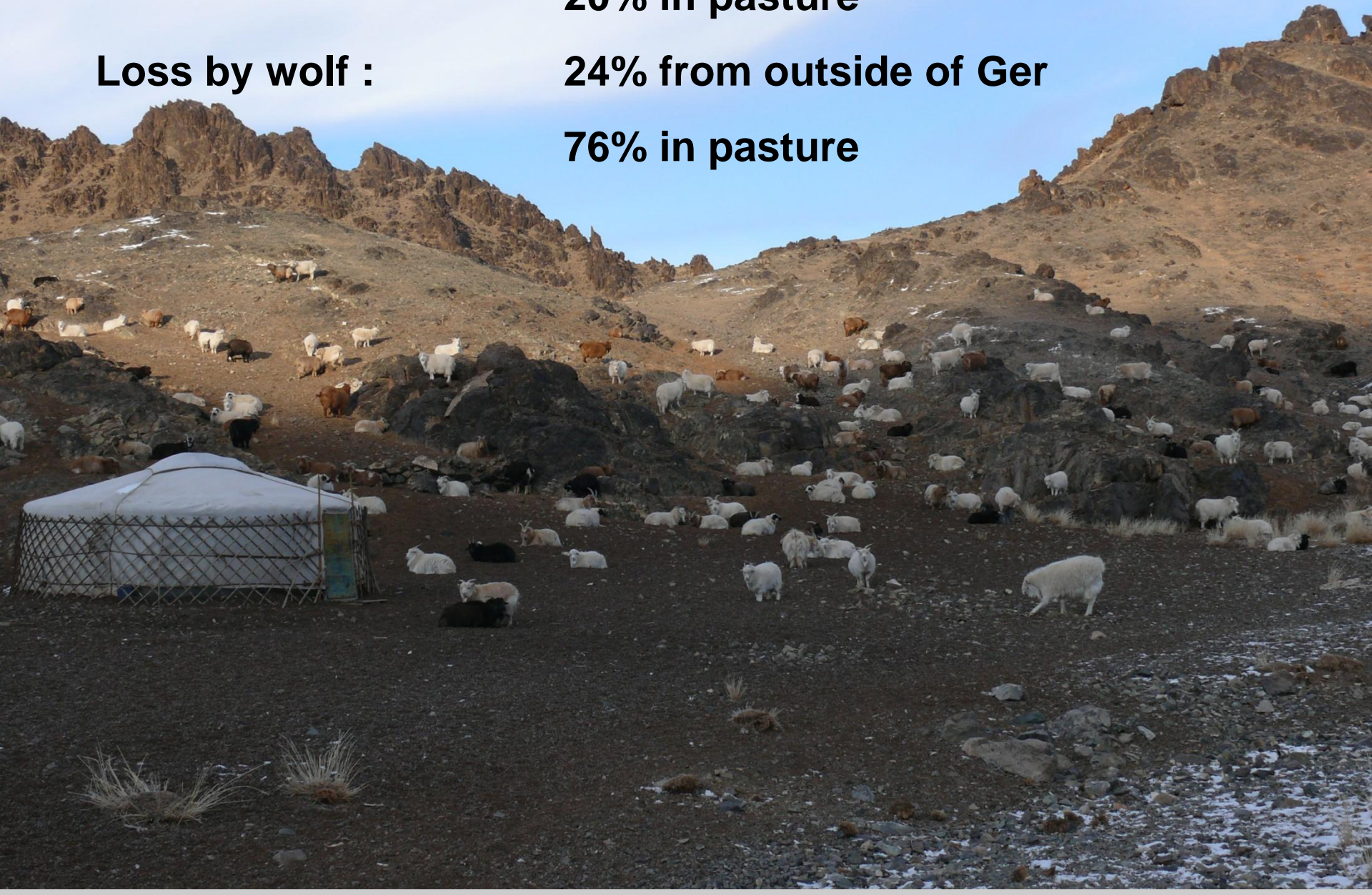
**Managing human – snow leopard conflicts**





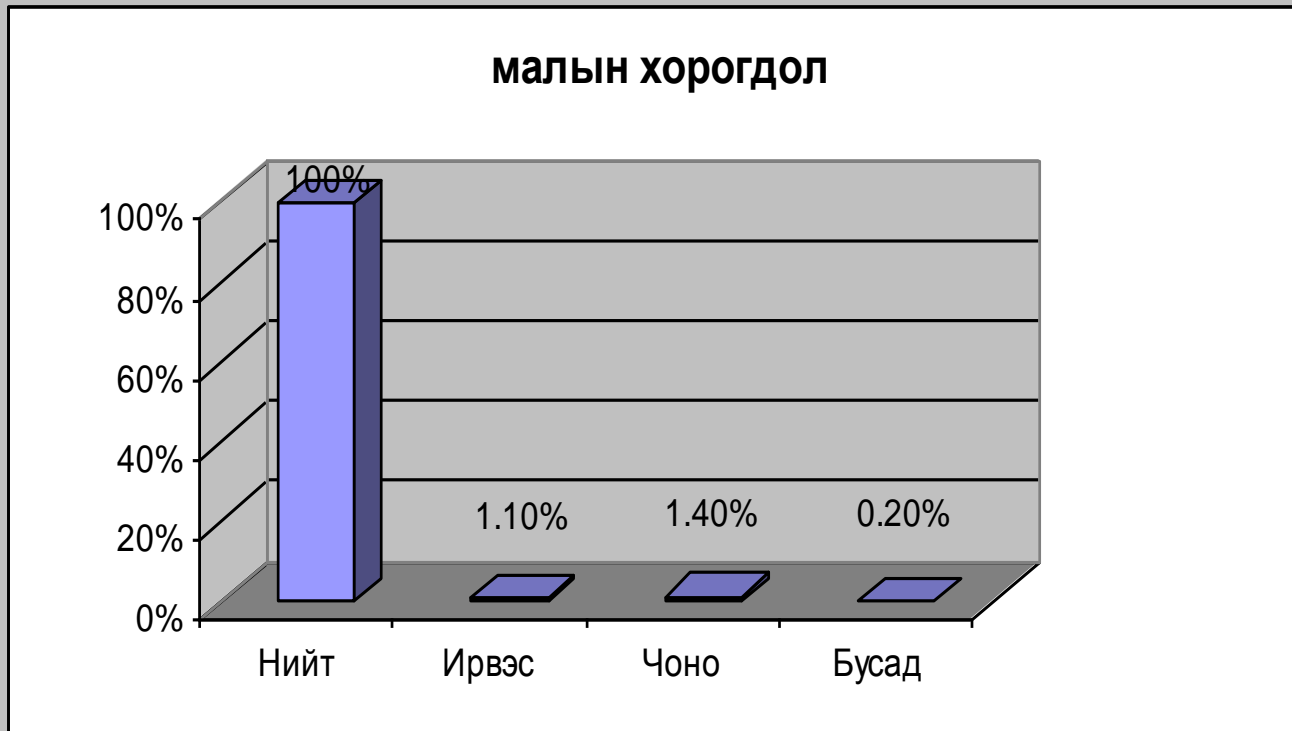
**Loss by snow leopard: 80% from outside of Ger  
20% in pasture**

**Loss by wolf : 24% from outside of Ger  
76% in pasture**



# Extent of loss:

- **Livestock loss in 2008 in the area**



**2% by  
predators of  
total loss**

**50 families involved in study with 13,000 livestock: 152 was lost by snow leopard, 176 by wolf and 25 by other reasons**



# Fully community driven



- Community creates program's norms and regulations
- Both wolf and snow leopard loss is compensated
- Premium amount is decided by members and is collected by cash once a year
- Insurance committee members are elected by program members
- livestock of participants insured by 100%
- Agreed upon on conservation commitments

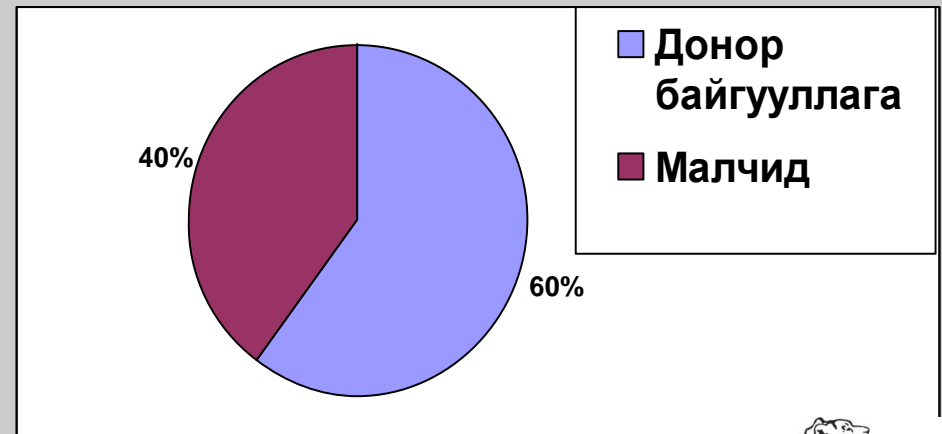


# Creating insurance funds:



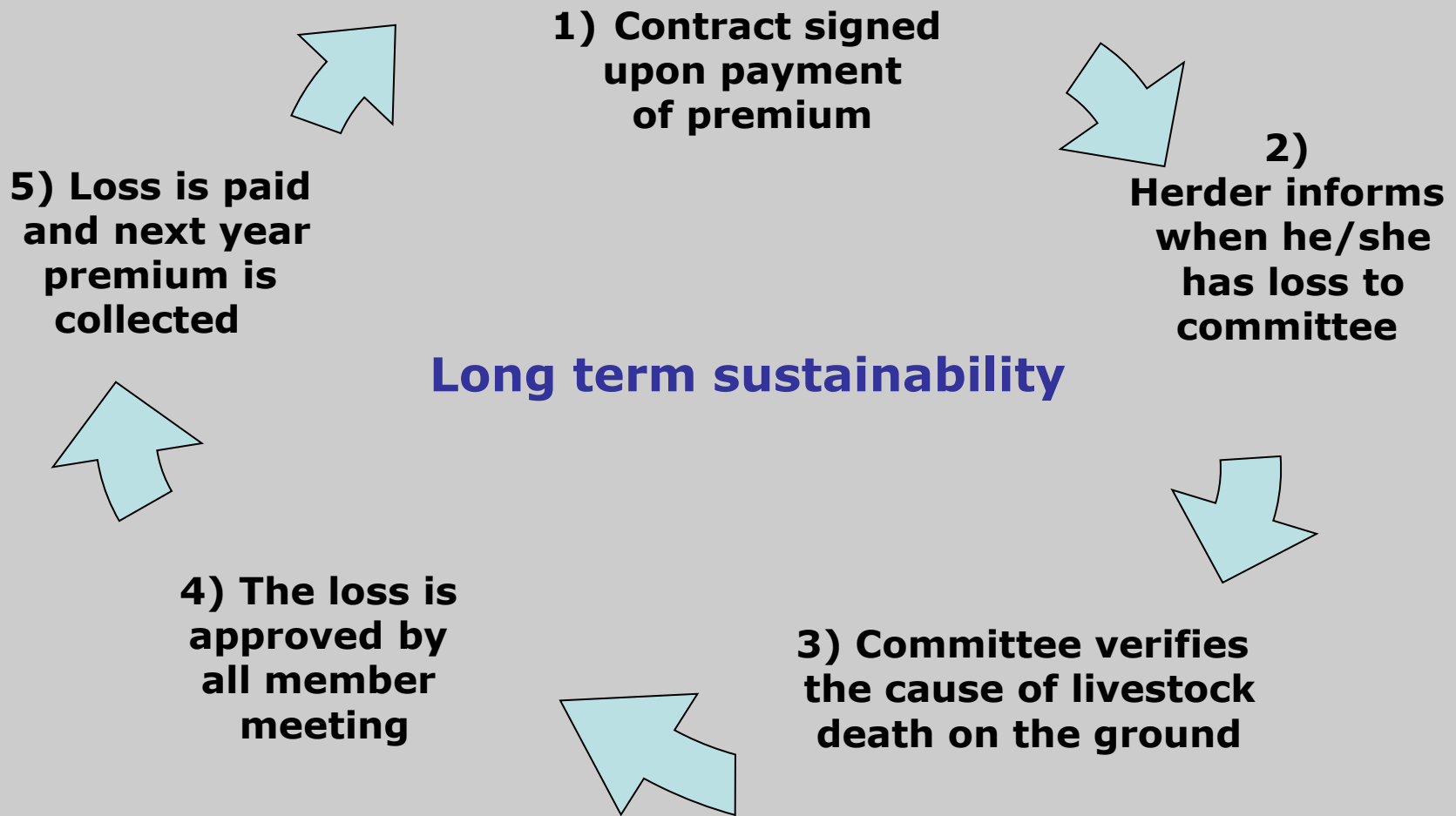
## 1. Insurance fund – how does it consist?

- Premium by herders
- Donation for SLCF ( for the first 5 years)



Snow  
Leopard  
Trust

# Program activity rotation

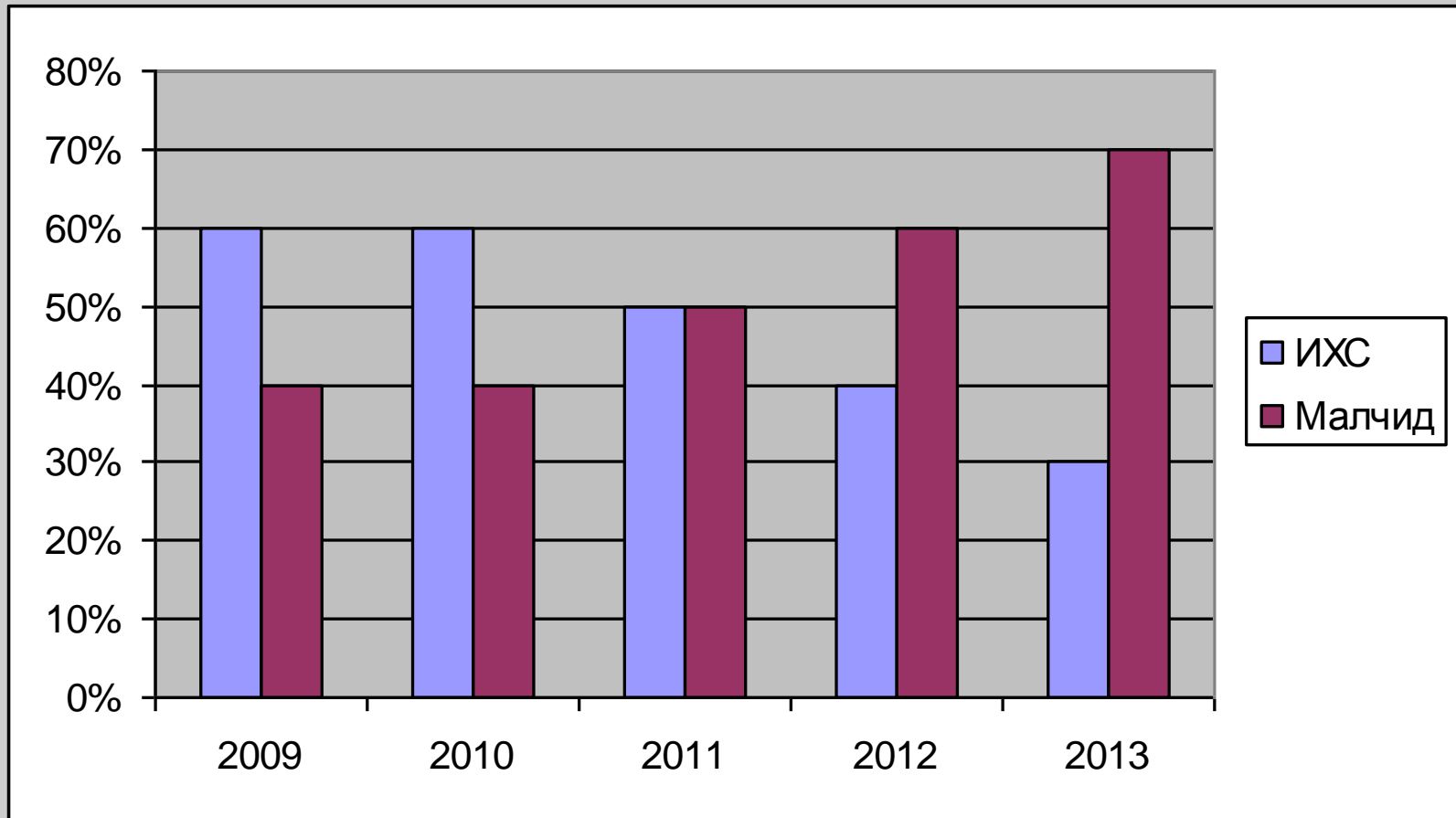




- Better livestock protection is encouraged through 'good herder prize'
- False claims is prevented through peer pressure and committee inspection



# 5 years - self sustainability?



# For the first 2 years: 2009-2010:

	2009	2010	2011	2012	2013
<b>Number of people involved</b>	<b>16</b>	<b>32</b>			
<b>Number of insured livestock</b>	<b>2,325</b>	<b>3,930</b>			
<b>A total amount in the funds</b>	<b>\$ 3,101</b>	<b>\$10,750</b>			
<b>A total amount paid losses (half year)</b>	<b>\$ 2,339</b>	<b>\$ 3,420</b>			



- Increase number of herders
- Encourage measures to prevent losses (corral improvements, dogs, better herding practices etc)
- Create better tolerance through education and financial support







Thank you for your attention

