

WWF LIVING PLANET REPORT

# HUMAN IMPACT

Our current consumption levels pose an unsustainable threat to the planet.  
How is this affecting biodiversity and endangered species?

## OUR ECOLOGICAL FOOTPRINT

How many 'Earths' worth of resources do we consume?

PAST 1970-2010

1970 1 EARTH



PRESENT 2010-2013

2010 1.5 EARTHS

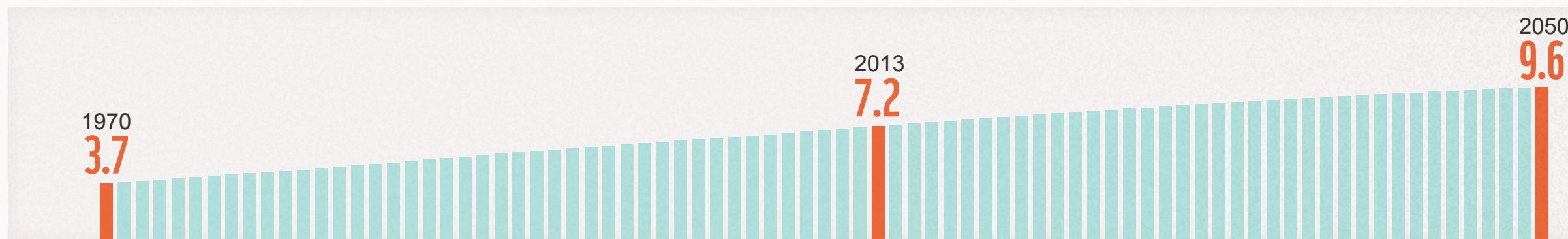


FUTURE 2013-2050

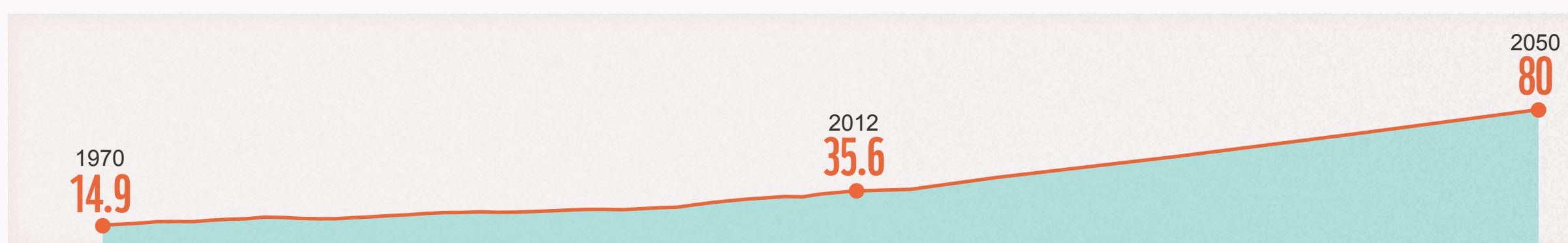
2050 3 EARTHS



Global human population billions



CO<sub>2</sub> emissions per year gigatonnes



## IMPACT ON BIODIVERSITY

Under threat From

Habitat destruction

- Overfishing
- Climate change
- Infrastructure development
- Water overextraction
- Pollution
- Poaching

BAD NEWS

GOOD NEWS

FUTURE WITHOUT ACTION

FUTURE WITH ACTION

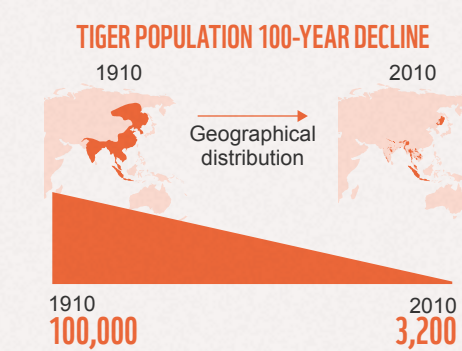
### ANIMALS

Tiger

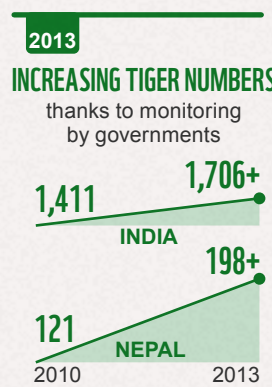
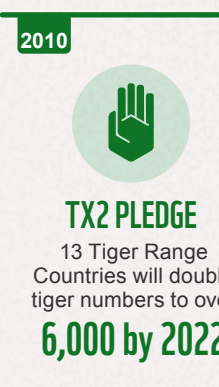
Habitat destruction, Poaching, Climate change



PAST

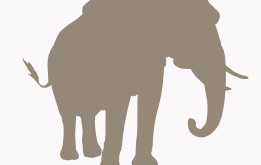


PRESENT

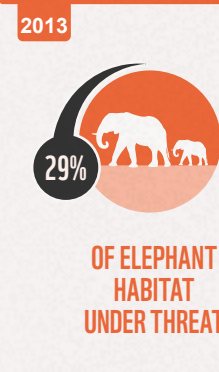
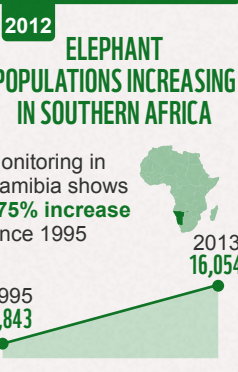
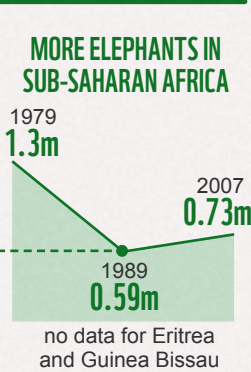


African Elephant

Habitat destruction, Poaching, Climate change

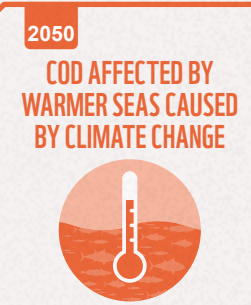
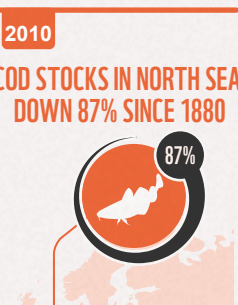
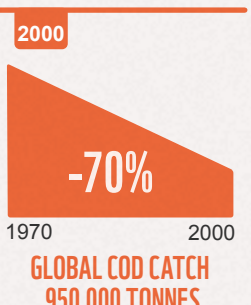
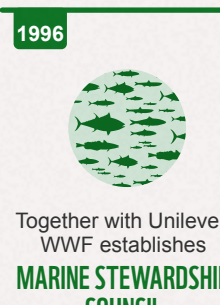


PAST



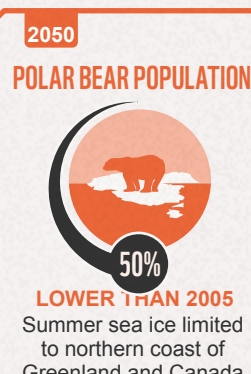
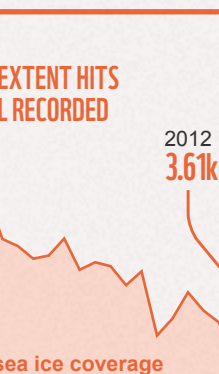
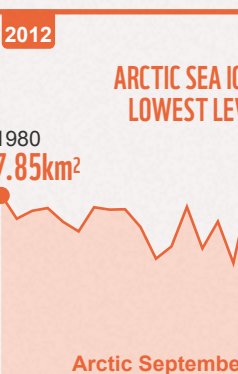
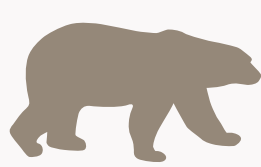
Cod

Overfishing, Climate change



Polar bear

Climate change, Habitat destruction, Poaching



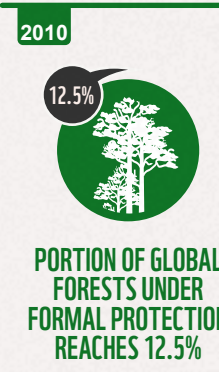
### ECOSYSTEMS

Forests

Habitat destruction, Climate change



PAST

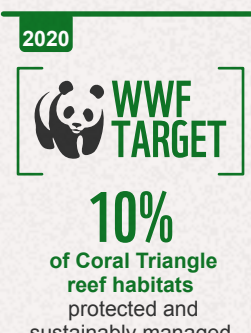
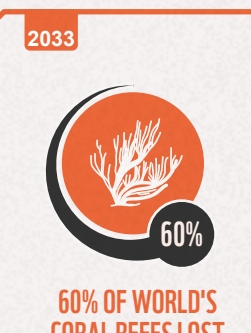
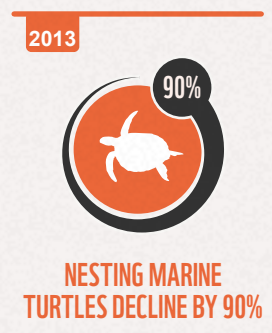
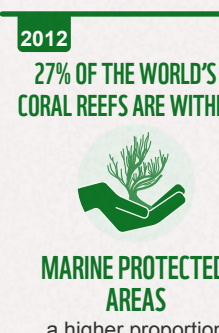
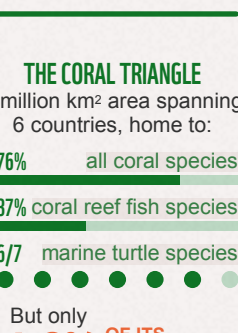
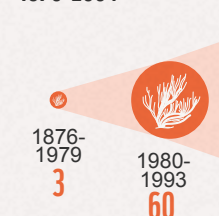


Corals

Climate change, Habitat destruction, Poaching

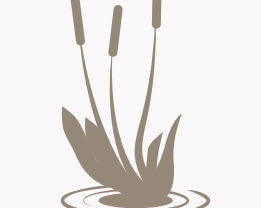


PAST

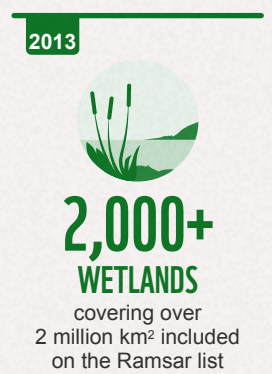
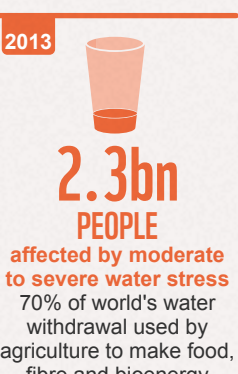
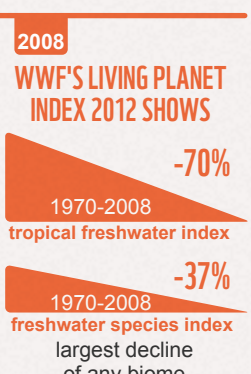


Freshwater

Climate change, Habitat destruction, Poaching



PAST



SOURCES

WWF; Global Footprint Network; UN, World Population Prospects: The 2012 revision (medium fertility scenario); Carbon Dioxide Information Analysis Center; Tyndall Centre; IPCC; Lemieux and Clarke 2009; UNEP / CITES, Elephants in the Dust: The African Elephant Crisis; Frank et al 2005; Mackinson 2002; ICES; MSC; Seafish / SAGB / MSC; Project Inshore; Drinkwater 2005; US Fish and Wildlife Service; IUCN NOAA; FAOSTAT; FSC; Coral Triangle Support Partnership; World Resources Institute; Ramsar Convention on Wetlands

panda.org/lpr